

User Manual

ATLONA

PC/COMPONENT TO HDMI SCALER WITH LOCAL PC/COMPONENT OUTPUT AT-HD510VGA



TABLE OF CONTENTS

1. Introduction	3
2. Package Contents	3
3. Features	3
4. Specification	3
5. Panel Descriptions	4
5.1 Front Panel	4
5.2 Rear Panel	4
6. OSD Operation	5
7. Activating a VGA output on a Laptop	5
8. Connection Diagram	8
8.1. PC to HDTV Connection	8
8.2. Component to HDTV Connection	8
9. Support Resolution	9
10. Resetting the Unit	9
11. Atlona Product Registration	9
12. Safety Information	10
13. Warranty	11

INTRODUCTION

This Scaler Box is designed to upscale analog video signal from PC/Component source to digital HDMI output of wide-range HDTV and PC resolutions, up to 1080p/WUXGA. Besides video upscaling, the scaler box also converts digital/analog audio signal to digital/analog format, then output to HDMI combining with the video, TOSLink (optical fiber), and phone jack (L/R audio) simultaneously. This unit has a comprehensive OSD menu that allows user to select a variety of output resolutions and adjust for best picture quality.

PACKAGE CONTENTS:

- AT-HD510VGA (PC/HDTV to HDMI Scaler)
- 5v power supply
- User manual

FEATURES:

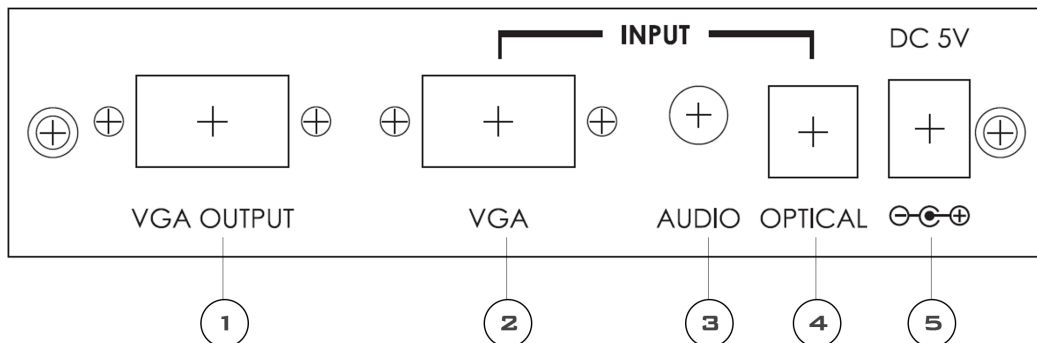
- HDMI 1.2, HDCP 1.1 and DVI 1.0 compliant.
- Local VGA out allows to connect local PC/Component monitor
- Scales any PC/HD resolutions to PC (VGA ~ WUXGA)/ HD (480i ~ 1080p) resolutions.
- Automatically detect the factory setting of the connected display and output the corresponding resolution and refresh rate, when the NATIVE output is selected.
- Provides output picture adjustment on contrast, brightness, hue, saturation, sharpness, RGB (color tone) level and aspect ratio size.
- Supports high resolution output (See section “9. Support Resolution” for reference.):
PC: VGA, SVGA, XGA, SXGA, UXGA, WXGA, WSXGA, WUXGA.
SD/HD: 480i, 576i, 480p, 576p, 720p, 1080i and 1080p
- Supports stereo LPCM analog/digital audio input and stereo LPCM analog/digital output. Simply select among the audio input sources in the OSD menu, then output the audio to HDMI, TOSLink and phone jack simultaneously.

SPECIFICATIONS:

Input ports	1 x VGA, 1 x 3.5mm Phone Jack, 1 x TOSLink (optical fiber)
Output ports	1 x HDMI, 1 x 3.5mm Phone Jack, 1 x TOSLink (optical fiber), 1 x VGA (local monitor)
Power Supply	5V/2.6A DC (US/EU standards, CE/FCC/UL certified)
Dimensions (mm)	154(D) x 100(W) x 25(H)
Weight(g)	340
Chassis Material	Aluminum
Silk Skin Color	Black
Operating Temperature	Operating from 0°C ~ 48°C

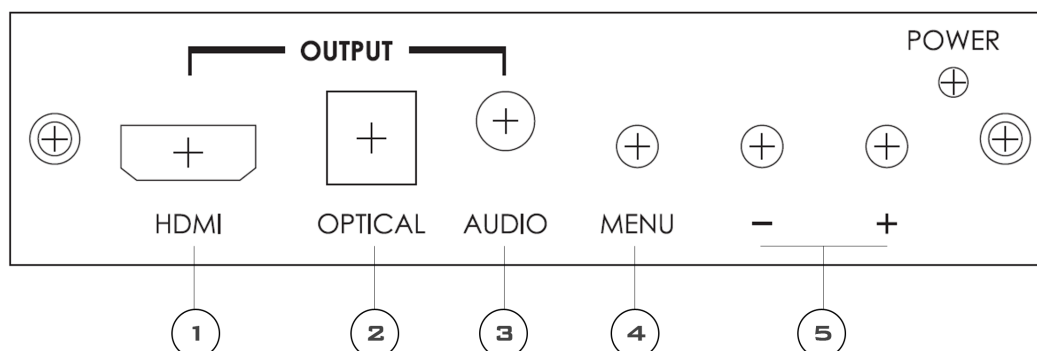
PANEL DESCRIPTION

1. Front Panel



1. Connect the D-Sub (15-pin) VGA port to local PC/Component monitor.
2. VGA input: connect VGA input to the VGA/Component output port of your source equipment.
3. Audio Input: Connect the PC 3.5mm phone jack input port to the analog audio output port of your source equipment.
4. TOSLink (optical fiber) Input: Connect the optical input port to the digital audio output port of your source equipment.
5. Power: Plug the 5VDC power supply into the unit and connect the adaptor to AC wall outlet.

2. Rear Panel



1. HDMI Output: Connect the HDMI output port to the HDMI input port of your display such like HDTV.
2. TOSLink (optical fiber) Output: Connect the optical output port to the digital audio input port of your amplifier.
3. Audio Output: Connect the PC 3.5mm phone jack output port to the analog audio input port of your equipment.
4. Menu Button: Press the MENU button to bring up OSD operation menu.
(See section "6. OSD Operation" for reference.)
5. +/- Button•:

www.atlona.com
 ATLONA is a registered trademark of ATLONA Corporation.
 ATLONA is a registered trademark of ATLONA Corporation.

OSD OPERATION

1 st Tier Option	2 nd Tier Option	Adjustment
CONTRAST	-	0 ~ 100 of Contrast Level
BRIGHTNESS	-	0 ~ 100 of Contrast Level
FINETUNE	ÉÚPŒÛÒ	0 ~ 100 of the Scaler's Pixel Alignment
	ĚŠUÔŠ	0 ~ 100 of Clock Adjustment
	ĚXÒÜVŒŠ	0 ~ 100 of the Signal's Vertical Position
	ĚPUÜQUPVOŠ	0 ~ 100 of the Signal's Horizontal P
COLOR	- RED	0 ~ 100 of Red Color Level
	- GREEN	0 ~ 100 of Green Color Level
	- BLUE	0 ~ 100 of Blue Color Level
	- EXIT	Back to 1st Tier
SIZE	-	FULL / OVERSCAN / UNDERSCAN / LETTERBOX / PANSCAN
OUTPUT	-	NATIVE / VGA / SVGA / XGA / SXGA / UXGA / 480i / 480p / 720p@60Hz / 1080i@60Hz / 1080p@60Hz / 576i / 576p / 720p@50Hz / 1080i@50Hz / 1080p@50Hz / WXGA / WSXGA / WUXGA
AUDIO	-	HDMI / EAR PHONE / OPTICAL
OSD	- HPOSITION	0 ~ 100 of OSD Horizontal Position
	- VPOSITION	0 ~ 100 of OSD Vertical Position
	- TIMER	0 ~ 100 of OSD Existing Time (sec.)
	- BACKGROUND	0 ~ 100 of OSD Transparent Level
	- EXIT	Back to 1st Tier
INFORMATION	-	SOURCE (Input Interface) INPUT (Input Resolution) OUTPUT (Output Resolution) VERSION (Firmware Version)

ACTIVATING A VGA OUTPUT ON A LAPTOP

Most laptops have the VGA output disabled by default. In order to use Atlona converter user would have to enable it.

There are 2 x configurations:

A) Mirror mode. In this mode, your desktop (or screen) is duplicated on the second display, so your audience sees what's on your screen. For example, use Mirrored mode if you're recording ideas as people mention them during a brainstorming session and you want participants to see what's being recorded. The main downside of this mode is that instant message pop-ups, e-mail notifications, and other potentially annoying messages appear on the screen. Also, if you browse for a file or switch between programs, your audience will see these actions on the second display.

Note: Most laptops have the VGA output disabled by default. User would have to press a combination of buttons to enable it.

1. On your laptop's keyboard, find the key marked "FUNCTION" or "Fn" (usually on the lower left corner of the keyboard).
2. Then, search for a key that has either the letters "CRT/LCD" or a little monitor icon. Most often, it will be in the top row of keys marked F1 through F12, but not always.
3. When you have keys located, press the FUNCTION key and then the LCD/CRT key that you located before at the same time. It might take a couple of seconds for the computer to react.
4. This should toggle the screen image through a cycle like this:
Image on Laptop Screen → Image on Projector → Image on Both (to go from one mode to another, you would have to simultaneously press Function key and LCD/CRT at the same time)

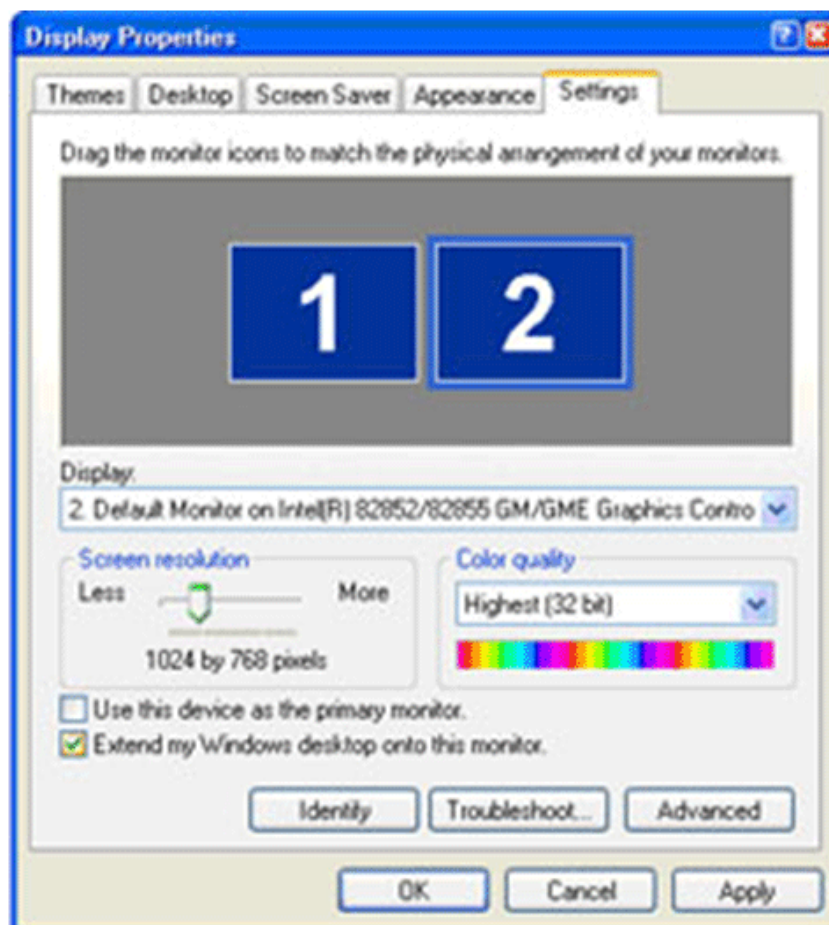


B). Extended mode.

In this mode, you extend your mobile PC screen space by using an additional display (whether a monitor or a projector screen). You can then use each screen independently. This mode is well suited for presentations because you can display the slides on one screen (usually the projector), and then hide notifications and other miscellaneous messages, and complete other tasks, such as taking notes, on your mobile PC screen. This mode is also very useful when you want to extend your workspace while using your mobile PC at your desk.

Note: Most laptops have the VGA output disabled by default. User would have to make a few adjustments in the video settings to enable the mode.

1. Right-click the desktop of your mobile PC, and then click Properties on the shortcut menu.
2. In the Display Properties dialog box, on the Settings tab, click the blue rectangle with the number 2 (which represents the external monitor), and then select the Extend my Windows desktop onto this monitor check box.
3. Under Screen resolution, drag the slider to the right to change the screen resolution of Monitor 2 to 1024 by 768 pixels, and then click OK.



4. When prompted, click Yes.

Note: If your desktop background does not appear on the external monitor, click No, and then repeat step 3 to decrease the screen resolution.

Adjust the position of the monitors

By default, Windows places the second screen to the right of the first (or primary) one. You can change the position of the monitors to reflect their physical position.

1. Right-click the desktop of your mobile PC, and then click Properties on the shortcut menu.
2. In the Display Properties dialog box, on the Settings tab, drag the graphical representation of Monitor 2 (the blue box with the number 2 in it) to the left of Monitor 1, and then click OK.
3. When prompted, click Yes.

Adjust your screen settings

When you first enable Extended Desktop mode, your taskbar and any icons on your desktop appear on the mobile PC screen; desktop space without icons appears on the external monitor. You may find it easier to show the taskbar on the external monitor since it is usually the larger of the two screens.

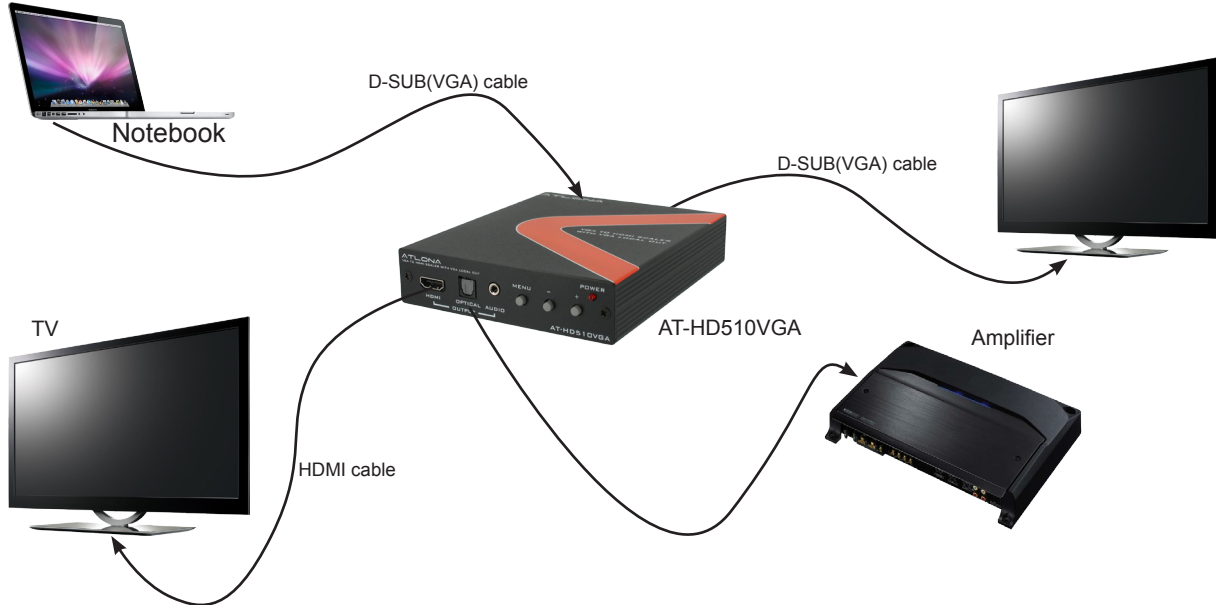
1. On your mobile PC screen, right-click an empty area of the taskbar, and then click Lock the Taskbar.
2. Drag the taskbar to the external desktop and drop it where you want it to appear.

You can now take advantage of the extra screen space by dragging program windows to the external monitor. You can also resize windows to stretch across the two screens.

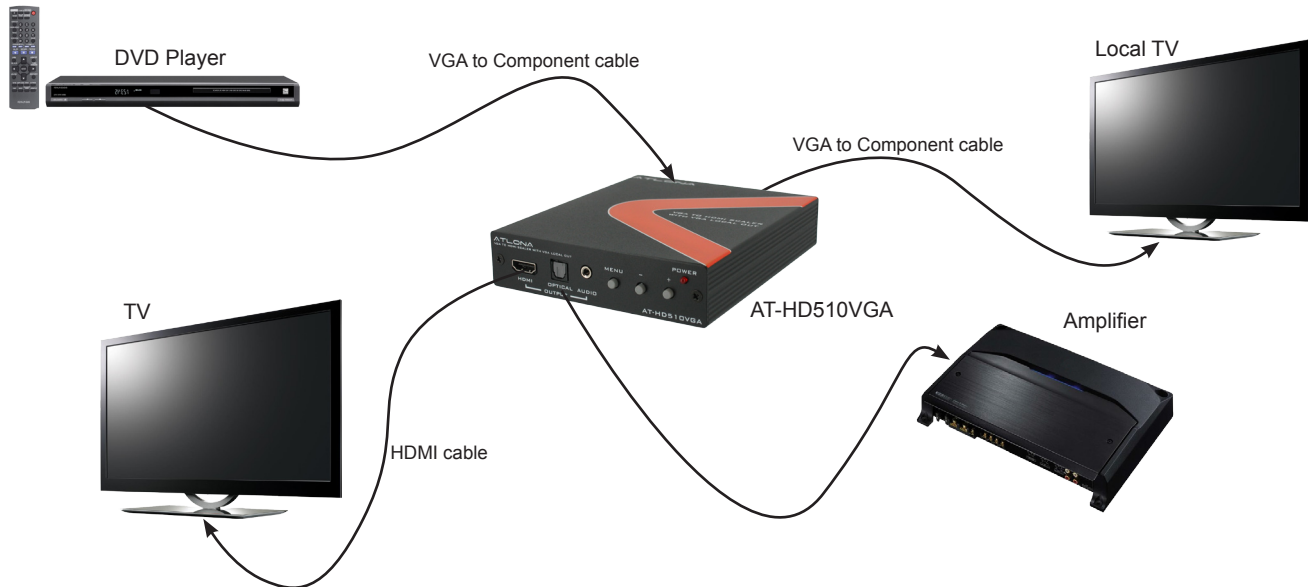
By taking advantage of additional monitors, you can share information with others more effectively when you're giving a presentation and also improve your productivity by extending your workspace when you're using your mobile PC at your desk.

CONNECTION AND INSTALLATION

1. PC to HDTV Connection



2. Component to HDTV Connection



SUPPORT RESOLUTION

	VGA INPUT/OUTPUT	HDMI OUTPUT	
	PC	SD/HD	PC
480I/576I (NTSC/PAL)	v	v	
480P/576P	v	v	
720P@(50/60)	v	v	
1080I@(25/30)	v	v	
1080P@(50/60)	v	v	
VGA@(60/72/75/85)	v		v
SVGA@(56/60/72/75/85)	v		v
XGA@(60/70/75/85)	v		v
SXGA@(60/75/85)	v		v
UXGA@60	v		v
WXGA@60(1280x800)	v		v
WSXGA@60(1680x1050)	v		v
WUXGA@60(1920x1200)	v		v

Note: If PC connected to the VGA input, local output will only support PC resolutions. If HD/SD source connected to the VGA input, local output will support only HD/SD resolutions.

RESETTING THE UNIT

1. Press and hold "Menu" button for 5 seconds
2. Disconnect power plug from the unit while holding the "Menu" and wait for 5 seconds
3. Connect the power plug back in and continue holding the "Menu" for another 5 seconds
4. Release the "Menu" and allow up to 10 seconds for the unit to connect to the display

SAFETY INFORMATION

Safeguards

To reduce the risk of electric shock, do not expose this product to rain or moisture.

If the wall plug does not fit into your local power socket, hire an electrician to replace your obsolete socket.

Do not modify the wall plug. Doing so will void the warranty and safety features.

This equipment should be installed near the socket outlet and the device should be easily accessible in case it requires disconnection.

Precautions

FCC Regulations state that any unauthorized changes or modifications to this equipment not expressly approved by the manufacturer could void the user's authority to operate this equipment.

Operate this product using only the included external power supply. Use of other power supplies could impair performance, damage the product or cause fires.

In the event of an electrostatic discharge, this device may automatically turn off. If this occurs, unplug the device, and plug it back in.

Protect and route power cords so they will not be stepped on or pinched by anything placed on or against them. Be especially careful of plug-ins, or cord exit points from this product.

Avoid excessive humidity, sudden temperature changes or temperature extremes.

Keep this product away from wet locations such as bathtubs, sinks, laundries, wet basements and swimming pools.

Use only accessories recommended by ATLONA to avoid fire, shock or other hazards.

Unplug the product before cleaning. Use a damp cloth for cleaning. Do not use cleaning fluid or aerosols, which could enter the unit and cause damage, fire or electrical shock. Some substances may also mar the finish of the product.

Never open or remove unit panels or make any adjustments not described in this manual. Attempting to do so could expose you to dangerous electrical shock or other hazards. It may also cause damage to your AT-HD510VGA. Opening the product will void the warranty.

Do not attempt to service the unit. Instead disconnect it and contact your Authorized ATLONA reseller or contact ATLONA directly.

Atlona, Inc. ("Atlona") Limited Product Warranty Policy

Coverage

Atlona warrants its products will substantially perform to their published specifications and will be free from defects in materials and workmanship under normal use, conditions and service.

Under its Limited Product Warranty, Atlona, at its sole discretion, will either:

- A) repair or facilitate the repair of defective products within a reasonable period of time, restore products to their proper operating condition and return defective products free of any charge for necessary parts, labor and shipping
- OR**
- B) replace and return, free of charge, any defective products with direct replacement or with similar products deemed by Atlona to perform substantially the same function as the original products
- OR**
- C) refund the pro-rated value based on the remaining term of the warranty period, not to exceed MSRP, in cases where products are beyond repair and/or no direct or substantially similar replacement products exist.

Repair, replacement or refund of Atlona's products is the purchaser's exclusive remedy and Atlona's liability does not extend to any other damages, incidental, consequential or otherwise.

This Limited Product Warranty extends to the original end-user purchaser of Atlona's products and is non-transferrable to any subsequent purchaser(s) or owner(s) of these products.

Coverage Periods

Atlona's Limited Product Warranty Period begins on the date of purchase by the end-purchaser. The date contained on the end-purchaser's sales or delivery receipt is the proof purchase date.

Limited Product Warranty Terms – New Products

- 10 years from proof of purchase date for hardware/electronics products purchased on or after June 1, 2013
- 3 years from proof of purchase date for hardware/electronics products purchased before June 1, 2013
- Lifetime Limited Product Warranty for all cable products

Limited Product Warranty Terms – Refurbished (B-Stock) Products

- 3 years from proof of purchase date for all Refurbished (B-Stock) hardware and electronic products purchased on or after June 1, 2013

Remedy

Atlona recommends that end-purchasers contact their authorized Atlona dealer or reseller from whom they purchased their products. Atlona can also be contacted directly. Visit www.atlona.com for Atlona's contact information and hours of operation. Atlona requires that a dated sales or delivery receipt from an authorized dealer, reseller or end-purchaser is provided before Atlona extends its warranty services. Additionally, a return merchandise authorization (RMA) and/or case number, is required to be obtained from Atlona in advance of returns.

Atlona requires that products returned are properly packed, preferably in the original carton, for shipping. Cartons not bearing a return authorization or case number will be refused. Atlona, at its sole discretion, reserves the right to reject any products received without advanced authorization. Authorizations can be requested by calling 1-877-536-3976 (US toll free) or 1-408-962-0515 (US/international) or via Atlona's website at www.atlona.com.

Exclusions

This Limited Product Warranty excludes:

- Damage, deterioration or malfunction caused by any alteration, modification, improper use, neglect, improper packing or shipping (such claims must be presented to the carrier), lightning, power surges, or other acts of nature.
- Damage, deterioration or malfunction resulting from the installation or removal of this product from any installation, any unauthorized tampering with this product, any repairs attempted by anyone unauthorized by Atlona to make such repairs, or any other cause which does not relate directly to a defect in materials and/or workmanship of this product.
- Equipment enclosures, cables, power supplies, batteries, LCD displays, and any accessories used in conjunction with the product(s).
- Products purchased from unauthorized distributors, dealers, resellers, auction websites and similar unauthorized channels of distribution.

Disclaimers

This Limited Product Warranty does not imply that the electronic components contained within Atlona's products will not become obsolete nor does it imply Atlona products or their electronic components will remain compatible with any other current product, technology or any future products or technologies in which Atlona's products may be used in conjunction with. Atlona, at its sole discretion, reserves the right not to extend its warranty offering in instances arising outside its normal course of business including, but not limited to, damage inflicted to its products from acts of god.

Limitation on Liability

The maximum liability of Atlona under this limited product warranty shall not exceed the original Atlona MSRP for its products. To the maximum extent permitted by law, Atlona is not responsible for the direct, special, incidental or consequential damages resulting from any breach of warranty or condition, or under any other legal theory. Some countries, districts or states do not allow the exclusion or limitation of relief, special, incidental, consequential or indirect damages, or the limitation of liability to specified amounts, so the above limitations or exclusions may not apply to you.

Exclusive Remedy

To the maximum extent permitted by law, this limited product warranty and the remedies set forth above are exclusive and in lieu of all other warranties, remedies and conditions, whether oral or written, express or implied. To the maximum extent permitted by law, Atlona specifically disclaims all implied warranties, including, without limitation, warranties of merchantability and fitness for a particular purpose. If Atlona cannot lawfully disclaim or exclude implied warranties under applicable law, then all implied warranties covering its products including warranties of merchantability and fitness for a particular purpose, shall provide to its products under applicable law. If any product to which this limited warranty applies is a "Consumer Product" under the Magnuson-Moss Warranty Act (15 U.S.C.A. §2301, ET SEQ.) or other applicable law, the foregoing disclaimer of implied warranties shall not apply, and all implied warranties on its products, including warranties of merchantability and fitness for the particular purpose, shall apply as provided under applicable law.

Other Conditions

Atlona's Limited Product Warranty offering gives legal rights, and other rights may apply and vary from country to country or state to state. This limited warranty is void if (i) the label bearing the serial number of products have been removed or defaced, (ii) products are not purchased from an authorized Atlona dealer or reseller. A comprehensive list of Atlona's authorized distributors, dealers and resellers can be found at www.atlona.com.

Atlona, Inc Product Registration

Thank you for purchasing this Atlona product. - We hope you enjoy it and will take an extra few moments to register your new purchase.

Registration creates an ownership record if your product is lost or stolen and helps ensure you'll receive notification of performance issues and firmware updates.

At Atlona we respect and protect your privacy, assuring you that your registration information is completely secure. Atlona product registration is completely voluntary and failure to register will not diminish your limited warranty rights.

To register go to: <http://www.atlona.com/registration>