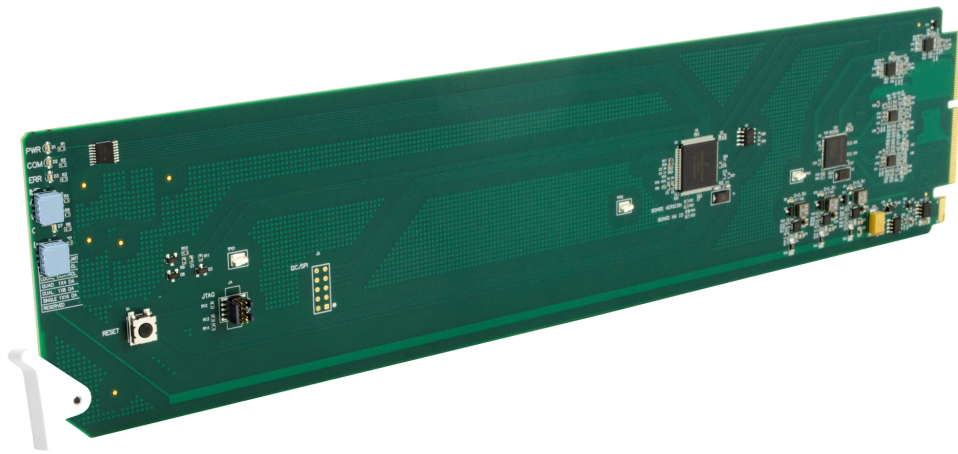


9910DA-AV-EQ



Analog Video Distribution Amplifier with EQ

Product Manual



Cobalt Digital Inc.

2406 E. University Ave.
Urbana, IL 61802
Voice 217.344.1243 • Fax 217.344.1245
www.cobaltdigital.com

Copyright

©Copyright 2014, Cobalt Digital Inc. All Rights Reserved.

Duplication or distribution of this manual and any information contained within is strictly prohibited without the express written permission of Cobalt Digital Inc. This manual and any information contained within, may not be reproduced, distributed, or transmitted in any form, or by any means, for any purpose, without the express written permission of Cobalt Digital Inc. Reproduction or reverse engineering of software used in this device is prohibited.

Disclaimer

The information in this document has been carefully examined and is believed to be entirely reliable. However, no responsibility is assumed for inaccuracies. Furthermore, Cobalt Digital Inc. reserves the right to make changes to any products herein to improve readability, function, or design. Cobalt Digital Inc. does not assume any liability arising out of the application or use of any product or circuit described herein.

Trademark Information

Cobalt[®] is a registered trademark of Cobalt Digital Inc.

Compass[®] is a registered trademark of Cobalt Digital Inc.

openGear[®] is a registered trademark of Ross Video Limited. **DashBoard**[™] is a trademark of Ross Video Limited.

Congratulations on choosing the Cobalt[®] 9910DA-AV-EQ Analog Video Distribution Amplifier with EQ. The 9910DA-AV-EQ is part of a full line of modular processing and conversion gear for broadcast TV environments. The Cobalt Digital Inc. line includes video decoders and encoders, audio embedders and de-embedders, distribution amplifiers, format converters, remote control systems and much more. Should you have questions pertaining to the installation or operation of your card, please contact us at the contact information on the front cover.

Manual No.:	9910DA-AV-EQ-OM
Document Version:	V1.1
Release Date:	March 26, 2014
Applicable for Firmware Version (or greater):	1.00
Description of product/manual changes:	- Add important info regarding restrictions on using clamping for inputs other than SD black burst. See Chapter 2. Installation and Setup for details.

Table of Contents

Chapter 1	Introduction	1-1
	Overview	1-1
	Manual Conventions	1-2
	Warnings, Cautions, and Notes	1-2
	Labeling Symbol Definitions.....	1-3
	Safety Summary	1-3
	Warnings.....	1-3
	Cautions	1-3
	9910DA-AV-EQ Functional Description	1-4
	9910DA-AV-EQ Rear I/O Modules.....	1-7
	Technical Specifications.....	1-7
	Warranty and Service Information	1-8
	Cobalt Digital Inc. Limited Warranty.....	1-8
	Contact Cobalt Digital Inc.....	1-9
Chapter 2	Installation and Setup	2-1
	Overview	2-1
	Setting Card Jumpers.....	2-1
	Installing the 9910DA-AV-EQ Into a Frame Slot.....	2-3
	Installing a Rear I/O Module	2-5
	9910DA-AV-EQ Rear I/O Modules.....	2-6
Chapter 3	Operating Instructions	3-1
	Overview	3-1
	Accessing the 9910DA-AV-EQ Card via Remote Control	3-1
	Accessing the 9910DA-AV-EQ Card Using DashBoard™	3-1
	Checking 9910DA-AV-EQ Card Information and Status	3-2
	Card-Edge Controls and Indicators	3-3
	Troubleshooting.....	3-4
	Basic Troubleshooting Checks	3-4
	Troubleshooting Network/Remote Control Errors	3-5
	In Case of Problems.....	3-5

This page intentionally blank

Introduction

Overview

This manual provides installation and operating instructions for the 9910DA-AV-EQ Analog Video Distribution Amplifier with EQ card (also referred to herein as the 9910DA-AV-EQ).

This manual consists of the following chapters:

- **Chapter 1, “Introduction”** – Provides information about this manual and what is covered. Also provides general information regarding the 9501.
- **Chapter 2, “Installation and Setup”** – Provides instructions for installing the 9501 in a frame, and optionally installing a 9910DA-AV-EQ Rear I/O Module.
- **Chapter 3, “Operating Instructions”** – Provides overviews of operating controls and instructions for using the 9910DA-AV-EQ.

This chapter contains the following information:

- **Manual Conventions (p. 1-2)**
- **Manual Conventions (p. 1-2)**
- **Safety Summary (p. 1-3)**
- **9910DA-AV-EQ Functional Description (p. 1-4)**
- **Technical Specifications (p. 1-7)**
- **Warranty and Service Information (p. 1-8)**
- **Contact Cobalt Digital Inc. (p. 1-9)**

Manual Conventions

In this manual, display messages and connectors are shown using the exact name shown on the 9910DA-AV-EQ itself (for example, connector names are shown like this: **ANLG IN**)

In this manual, the terms below are applicable as follows:

- **9910DA-AV-EQ** refers to the 9910DA-AV-EQ Analog Video Distribution Amplifier with EQ card.
- **Frame** refers to the HPF-9000, OG3-FR, 8321, or similar 20-slot frame that houses Cobalt® or other cards.
- **Device** and/or **Card** refers to a Cobalt® or other card.
- **System** and/or **Video System** refers to the mix of interconnected production and terminal equipment in which the 9910DA-AV-EQ and other cards operate.

Warnings, Cautions, and Notes

Certain items in this manual are highlighted by special messages. The definitions are provided below.

Warnings

Warning messages indicate a possible hazard which, if not avoided, could result in personal injury or death.




Cautions

Caution messages indicate a problem or incorrect practice which, if not avoided, could result in improper operation or damage to the product.

Notes

Notes provide supplemental information to the accompanying text. Notes typically precede the text to which they apply.

Labeling Symbol Definitions

	<p>Important note regarding product usage. Failure to observe may result in unexpected or incorrect operation.</p>
	<p>Electronic device or assembly is susceptible to damage from an ESD event. Handle only using appropriate ESD prevention practices.</p> <p>If ESD wrist strap is not available, handle card only by edges and avoid contact with any connectors or components.</p>
	<p>Symbol (WEEE 2002/96/EC)</p> <p>For product disposal, ensure the following:</p> <ul style="list-style-type: none"> • Do not dispose of this product as unsorted municipal waste. • Collect this product separately. • Use collection and return systems available to you.

Safety Summary

Warnings

! WARNING !

To reduce risk of electric shock do not remove line voltage service barrier cover on frame equipment containing an AC power supply. **NO USER SERVICEABLE PARTS INSIDE. REFER SERVICING TO QUALIFIED SERVICE PERSONNEL.**

Cautions

CAUTION

This device is intended for environmentally controlled use only in appropriate video terminal equipment operating environments.

CAUTION

This product is intended to be a component product of an openGear® or equivalent frame. Refer to the frame Product Manual for important safety instructions regarding the proper installation and safe operation of the frame as well as its component products.

CAUTION

If required, make certain Rear I/O Module(s) is installed before installing the 9910DA-AV-EQ into the frame slot. Damage to card and/or Rear I/O Module can occur if module installation is attempted with card already installed in slot.

CAUTION

If card resists fully engaging in rear I/O module mating connector, check for alignment and proper insertion in slot tracks. Damage to card and/or rear I/O module may occur if improper card insertion is attempted.

9910DA-AV-EQ Functional Description

Figure 1-1 shows a functional block diagram of the 9910DA-AV-EQ. With the appropriate rear module, the 9910DA-AV-EQ can provide up to eight DA analog video outputs and a looping input where desired.

9910DA-AV-EQ Input/Output Formats

The 9910DA-AV-EQ provides the following inputs and outputs:

- **Inputs:**
 - **ANALOG VIDEO IN** – coaxial analog composite video input
- **Outputs:**
 - **ANALOG OUT (1-8)** – up to eight analog composite outputs
 - **LOOP OUT** – where enabled using card jumper and with appropriate rear module, the card provides a hi-Z (unterminated) looped output of the input

Input Differential/Single-Ended Select

Using an on-card jumper, the 9910DA-AV-EQ can float the input shield connection from ground, and use both the + and shield connections as a differential pair, thereby providing much improved common-mode noise rejection that minimizes the effects of ground-loop noise and other issues. A single-ended jumper position provides normal operation where the shield connection is tied to chassis ground. (Default position is typical single-ended operation with shield lead tied to chassis GND.)

Input Loop/Termination Select

Using an on-card jumper, the 9910DA-AV-EQ can terminate the input into a $Z_o = 75\Omega$ or offer a hi-Z input with the input available as a looped output. (Default position is 75Ω terminated position with no looping output.)

Input AC/DC Coupling Select

Using an on-card jumper, the 9910DA-AV-EQ can use input capacitive coupling or full DC coupling to the card active circuitry. Low-frequency cut-off of the single coupling capacitor is such that normal video bandwidth is not affected. Where AC coupling is used, the Video Clamp feature of this card should also be used to restore correct DC levels with APL (active picture level) changes. (Default position is DC-coupled.)

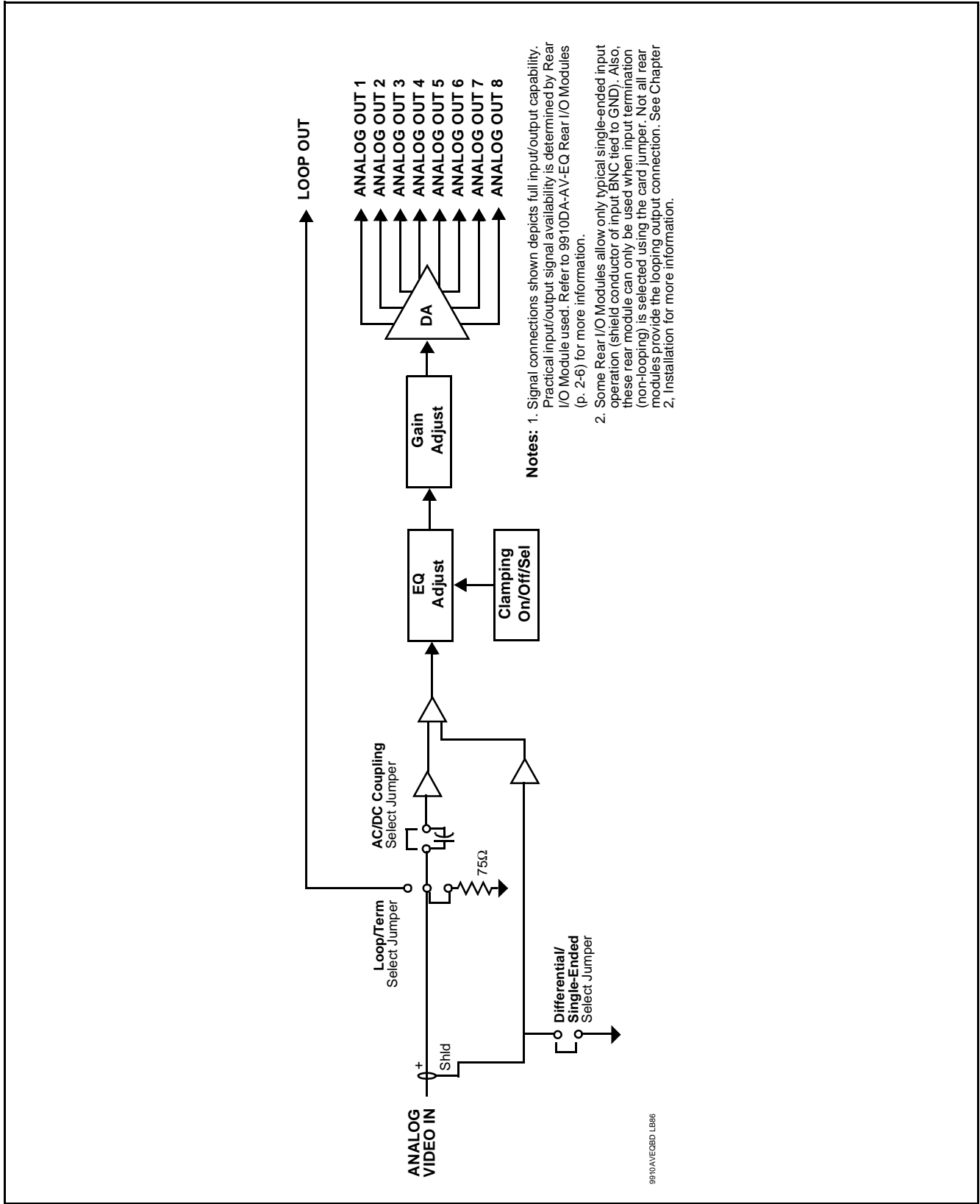


Figure 1-1 9910DA-AV-EQ Functional Block Diagram

Video Clamping Select

The card is equipped with clamping select jumpers. Clamping can be set on or off. When set to on, slow and fast clamping can also be selected using another jumper. Slow clamping is stable, while fast clamping is optimized to respond to fast changes in APL where required. (Default control setting is on; slow setting.) Clamping can help eliminate hum on the output signal in cases where poor grounding or other signal routing issues are present on the input. (Clamping is intended for use **only** with SD black-burst (bi-level) sync signals and may result in loss of output if used with HD tri-level input signals.)

EQ Adjust

(See Figure 1-2.) A card-edge trimmer potentiometer allows tailoring the card high-frequency response to compensate for reactive losses in long cable lengths. Depending on the purpose of the distributed signal (i.e., sync distribution or monitor/source feed), the EQ setting can be optimized for sync edge or frequency response (respectively). (Default control setting is null (full CCW control position) adjustment.) A card jumper sets the EQ adjust curve as **Normal** or **Max**. **Normal** setting provides normal increased gain at the high-end of the passband. **Max** setting provides cascaded high-end boost with a steeper compensation curve.

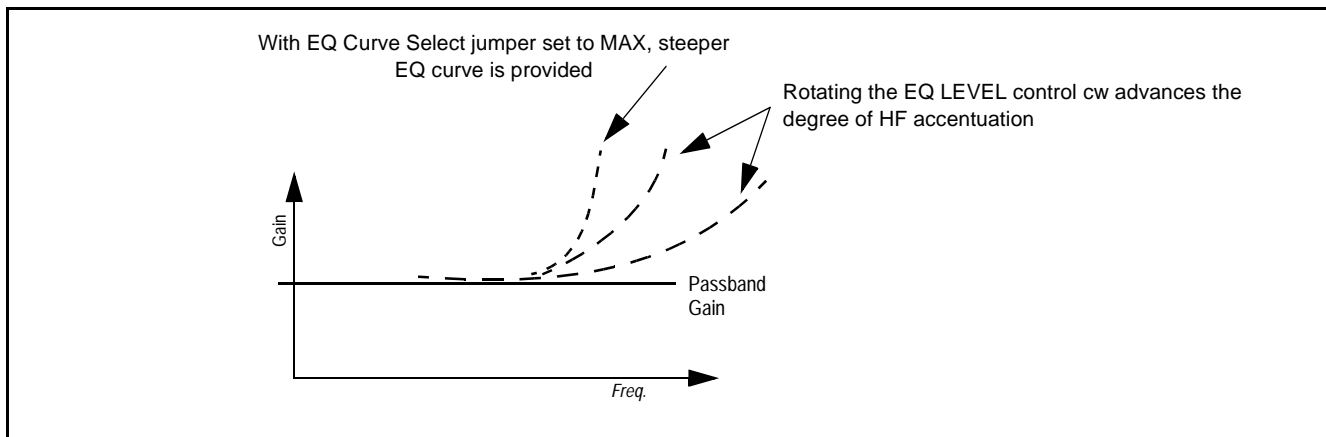


Figure 1-2 EQ Adjust Response Curves

Gain Adjust

A card-edge trimmer potentiometer allows gain adjustment of for the DA outputs (the default setting is unity gain). Gain adjustment is downstream of the EQ adjustment stage such that gain adjustment and EQ optimization have no effect on each other's optimized settings and are independent. Regardless of most distribution purposes, gain adjustment (if necessary) should provide for linear operation with 100 IRE at the destination. (Default control setting is unity gain.)

9910DA-AV-EQ Rear I/O Modules

The 9910DA-AV-EQ physically interfaces to system video connections at the rear of its frame using a Rear I/O Module. The full assortment of 9910DA-AV-EQ Rear I/O Modules is shown and described in 9910DA-AV-EQ Rear I/O Modules (p. 2-6) in Chapter 2, “Installation and Setup”.

Technical Specifications

Table 1-1 lists the technical specifications for the 9910DA-AV-EQ 9910DA-AV-EQ Analog Video Distribution Amplifier with EQ card.

Table 1-1 Technical Specifications

Item	Characteristic
Part number, nomenclature	9910DA-AV-EQ-3G Analog Video Distribution Amplifier with EQ
Installation/usage environment	Intended for installation and usage in frame meeting openGear™ modular system definition.
Power consumption	< 2 Watts maximum
Installation Density	Up to 20 cards per 20-slot frame
Environmental: Operating temperature: Relative humidity (operating or storage):	32° – 104° F (0° – 40° C) < 95%, non-condensing
Frame communication	10/100 Mbps Ethernet with Auto-MDIX.
Indicators	Card edge display and indicators as follows: <ul style="list-style-type: none"> • Status/Error LED indicator • Input Presence LED indicator
Analog Video Input	Number of inputs: (1) Impedance: User selectable as hi-Z looping or card-terminated 75Ω Level: 1 Vp-p, nominal Return Loss: 46 dB @ 3.58 MHz Input modes: User selectable as differential/single-ended and AC or DC coupled
Analog Video Outputs	Number of DA outputs: up to (8) Impedance: 75 Ω Level: 1 Vp-p, nominal Looping Output: (1)
Performance	Frequency response: >0.05 dB @ 3.58 MHz Differential Gain: >0.15% @ 3.58 MHz Differential Phase: >0.15° @ 3.58 MHz S/N: >60 dB; 5 MHz BW

Warranty and Service Information

Cobalt Digital Inc. Limited Warranty

This product is warranted to be free from defects in material and workmanship for a period of five (5) years from the date of shipment to the original purchaser, except that 4000, 5000, 6000, 8000 series power supplies, and Dolby® modules (where applicable) are warranted to be free from defects in material and workmanship for a period of one (1) year.

Cobalt Digital Inc.'s ("Cobalt") sole obligation under this warranty shall be limited to, at its option, (i) the repair or (ii) replacement of the product, and the determination of whether a defect is covered under this limited warranty shall be made at the sole discretion of Cobalt.

This limited warranty applies only to the original end-purchaser of the product, and is not assignable or transferrable therefrom. This warranty is limited to defects in material and workmanship, and shall not apply to acts of God, accidents, or negligence on behalf of the purchaser, and shall be voided upon the misuse, abuse, alteration, or modification of the product. Only Cobalt authorized factory representatives are authorized to make repairs to the product, and any unauthorized attempt to repair this product shall immediately void the warranty. Please contact Cobalt Technical Support for more information.

To facilitate the resolution of warranty related issues, Cobalt recommends registering the product by completing and returning a product registration form. In the event of a warrantable defect, the purchaser shall notify Cobalt with a description of the problem, and Cobalt shall provide the purchaser with a Return Material Authorization ("RMA"). For return, defective products should be double boxed, and sufficiently protected, in the original packaging, or equivalent, and shipped to the Cobalt Factory Service Center, postage prepaid and insured for the purchase price. The purchaser should include the RMA number, description of the problem encountered, date purchased, name of dealer purchased from, and serial number with the shipment.

Cobalt Digital Inc. Factory Service Center

2406 E. University Avenue
Urbana, IL 61802 USA
www.cobaltdigital.com

Office: (217) 344-1243
Fax: (217) 344-1245
Email: info@cobaltdigital.com

THIS LIMITED WARRANTY IS EXPRESSLY IN LIEU OF ALL OTHER WARRANTIES EXPRESSED OR IMPLIED, INCLUDING THE WARRANTIES OF MERCHANTABILITY AND FITNESS FOR A PARTICULAR PURPOSE AND OF ALL OTHER OBLIGATIONS OR LIABILITIES ON COBALT'S PART. ANY SOFTWARE PROVIDED WITH, OR FOR USE WITH, THE PRODUCT IS PROVIDED "AS IS." THE BUYER OF THE PRODUCT ACKNOWLEDGES THAT NO OTHER REPRESENTATIONS WERE MADE OR RELIED UPON WITH RESPECT TO THE QUALITY AND FUNCTION OF THE GOODS HEREIN SOLD. COBALT PRODUCTS ARE NOT AUTHORIZED FOR USE IN LIFE SUPPORT APPLICATIONS.

COBALT'S LIABILITY, WHETHER IN CONTRACT, TORT, WARRANTY, OR OTHERWISE, IS LIMITED TO THE REPAIR OR REPLACEMENT, AT ITS OPTION, OF ANY DEFECTIVE PRODUCT, AND SHALL IN NO EVENT INCLUDE SPECIAL, INDIRECT, INCIDENTAL, OR CONSEQUENTIAL DAMAGES (INCLUDING LOST PROFITS), EVEN IF IT HAS BEEN ADVISED OF THE POSSIBILITY OF SUCH DAMAGES.

Contact Cobalt Digital Inc.

Feel free to contact our thorough and professional support representatives for any of the following:

- Name and address of your local dealer
- Product information and pricing
- Technical support
- Upcoming trade show information

Phone:	(217) 344-1243
Fax:	(217) 344-1245
Web:	www.cobaltdigital.com
General Information:	info@cobaltdigital.com
Technical Support:	support@cobaltdigital.com

This page intentionally blank

Installation and Setup

Overview

This chapter contains the following information:

- Setting Card Jumpers (p. 2-1)
- Installing the 9910DA-AV-EQ Into a Frame Slot (p. 2-3)
- Installing a Rear I/O Module (p. 2-5)

Setting Card Jumpers

CAUTION



This device contains semiconductor devices which are susceptible to serious damage from Electrostatic Discharge (ESD). ESD damage may not be immediately apparent and can affect the long-term reliability of the device.


Always use proper ESD handling precautions and equipment when working on circuit boards and related equipment.

Figure 2-1 and Table 2-1 show the location and orientation of the card jumpers and provide details for setting the jumpers. These settings should be considered and changed (if required) to optimize card operation for the intended payload.

Table 2-1 9910DA-AV-EQ Card Jumpers and Details

Jumper	Details and Recommended Settings	Default Settings
Input Differential/Single-Ended Select	<p>Sets the input shield connection as tied to chassis ground (normal position) or as float the input shield connection from ground, and use both the + and shield connections as a differential pair.</p> <p>The differential setting can provide much improved common-mode noise rejection that minimizes the effects of ground-loop noise and other issues.</p> <p>Note: Some Rear I/O Modules have the input shield connector tied to GND at the rear I/O module. When used with these rear I/O modules, differential input is not available and jumper should be set to default single-ended position. See 9910DA-AV-EQ Rear I/O Modules (p. 2-6) for more information.</p>	Single-ended

Table 2-1 9910DA-AV-EQ Card Jumpers and Details — continued

Jumper	Details and Recommended Settings	Default Settings
Input Loop/Termination Select	Sets the input to terminate into a $Z_o = 75\Omega$ non-looping termination or offer a hi-Z input with the input available as a looped output. Note: Some Rear I/O Modules are not equipped with a LOOP OUT connector. When used with these rear I/O modules, jumper should be set to default TERM (terminated) position. See 9910DA-AV-EQ Rear I/O Modules (p. 2-6) for more information.	Terminated; non-looping
Input AC/DC Coupling Select	Sets the signal coupling at the first active device in the card as capacitively coupled or full (input-to-output) DC coupled. The AC-coupled position can restore expected ground-level blanking on sources where the blanking interval may not be at GND potential. Note: • Card has two AC/DC jumpers. Both must be set to AC or DC for proper operation. • Clamping should also be used if AC coupling is used.	DC-coupled
Video Clamping Select	Sets clamping on or off. Clamping can help eliminate hum on the output signal in cases where poor grounding or other signal routing issues are present on the input. When set to on, slow and fast clamping can also be selected using another jumper. Slow clamping is stable, while fast clamping is optimized to respond to fast changes in APL where required.  Clamping is intended for use only with SD black-burst (bi-level) sync signals and may result in loss of output if used with HD tri-level input signals. If inputs other than SD black burst may be present, do not enable clamping. Clamping is not required for any input condition where excessive hum or grounding issues are not present.	Clamping=Off; slow setting
EQ Curve Select	Sets the compensation curve aggressiveness of the EQ. NORM setting provides normal increased gain at high-end of passband. MAX setting provides cascaded high-end boost with a steeper compensation curve.	Norm

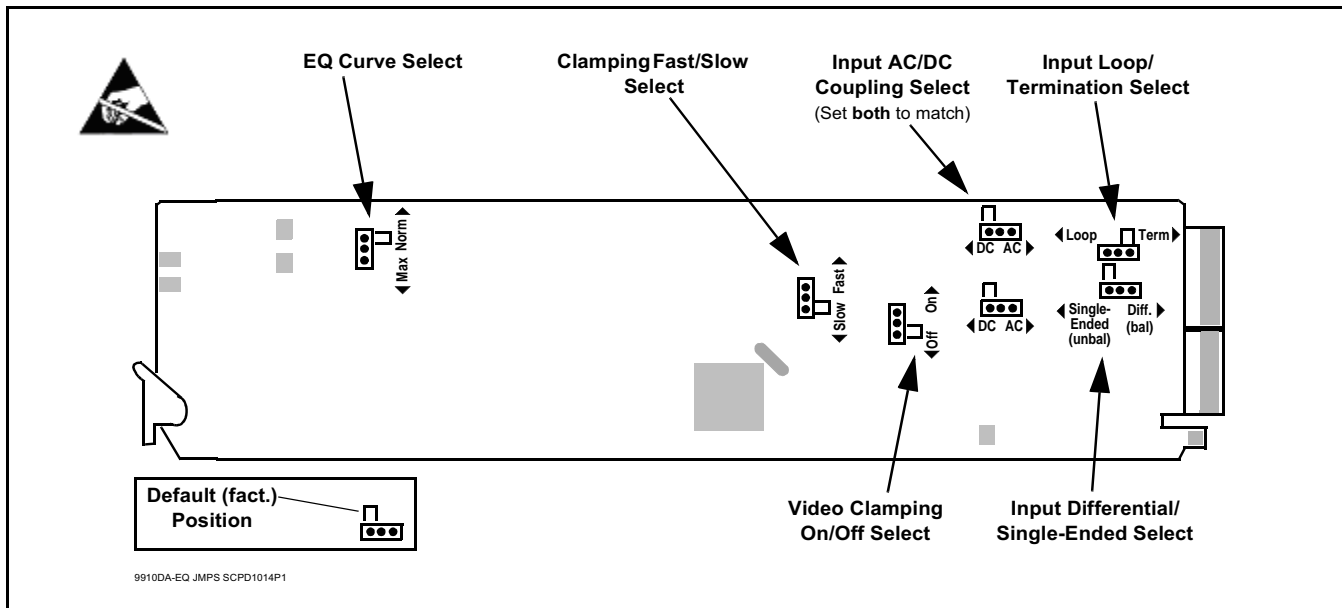


Figure 2-1 9910DA-AV-EQ Card Jumpers

Installing the 9910DA-AV-EQ Into a Frame Slot

CAUTION

This device contains semiconductor devices which are susceptible to serious damage from Electrostatic Discharge (ESD). ESD damage may not be immediately apparent and can affect the long-term reliability of the device.

Avoid handling circuit boards in high static environments such as carpeted areas, and when wearing synthetic fiber clothing. Always use proper ESD handling precautions and equipment when working on circuit boards and related equipment.

Note: If installing the 9910DA-AV-EQ in a slot with no rear I/O module, a Rear I/O Module is required before cabling can be connected. Refer to Installing a Rear I/O Module (p. 2-5) for rear I/O module installation procedure.

CAUTION

If required, make certain Rear I/O Module(s) is installed before installing the 9910DA-AV-EQ into the frame slot. Damage to card and/or Rear I/O Module can occur if module installation is attempted with card already installed in slot.

Note: Check the packaging in which the 9910DA-AV-EQ was shipped for any extra items such as a Rear I/O Module connection label. In some cases, this label is shipped with the card and to be installed on the Rear I/O connector bank corresponding to the slot location of the card.

Install the 9910DA-AV-EQ into a frame slot as follows:

1. Determine the slot in which the 9910DA-AV-EQ is to be installed.
2. Open the frame front access panel.
3. While holding the card by the card edges, align the card such that the plastic ejector tab is on the bottom.
4. Align the card with the top and bottom guides of the slot in which the card is being installed.
5. Gradually slide the card into the slot. When resistance is noticed, gently continue pushing the card until its rear printed circuit edge terminals engage fully into the rear I/O module mating connector.

CAUTION

If card resists fully engaging in rear I/O module mating connector, check for alignment and proper insertion in slot tracks. Damage to card and/or rear I/O module may occur if improper card insertion is attempted.

6. Verify that the card is fully engaged in rear I/O module mating connector.
7. Close the frame front access panel.
8. Connect the input and output cables as shown in 9910DA-AV-EQ Rear I/O Modules (p. 2-6).
9. Repeat steps 1 through 8 for other 9910DA-AV-EQ cards.

Note: To remove a card, press down on the ejector tab to unseat the card from the rear I/O module mating connector. Evenly draw the card from its slot.

Note: If installing a card in a frame already equipped for, and connected to DashBoard™, no network setup is required for the card. The card will be discovered by DashBoard™ and be ready for use.

Installing a Rear I/O Module

Note: This procedure is applicable **only if a Rear I/O Module is not currently installed** in the slot where the 9910DA-AV-EQ is to be installed.

If installing the 9910DA-AV-EQ in a slot already equipped with a suitable I/O module, omit this procedure.

Install a Rear I/O Module as follows:

1. On the frame, determine the slot in which the 9910DA-AV-EQ is to be installed.
2. In the mounting area corresponding to the slot location, install Rear I/O Module as shown in Figure 2-2.

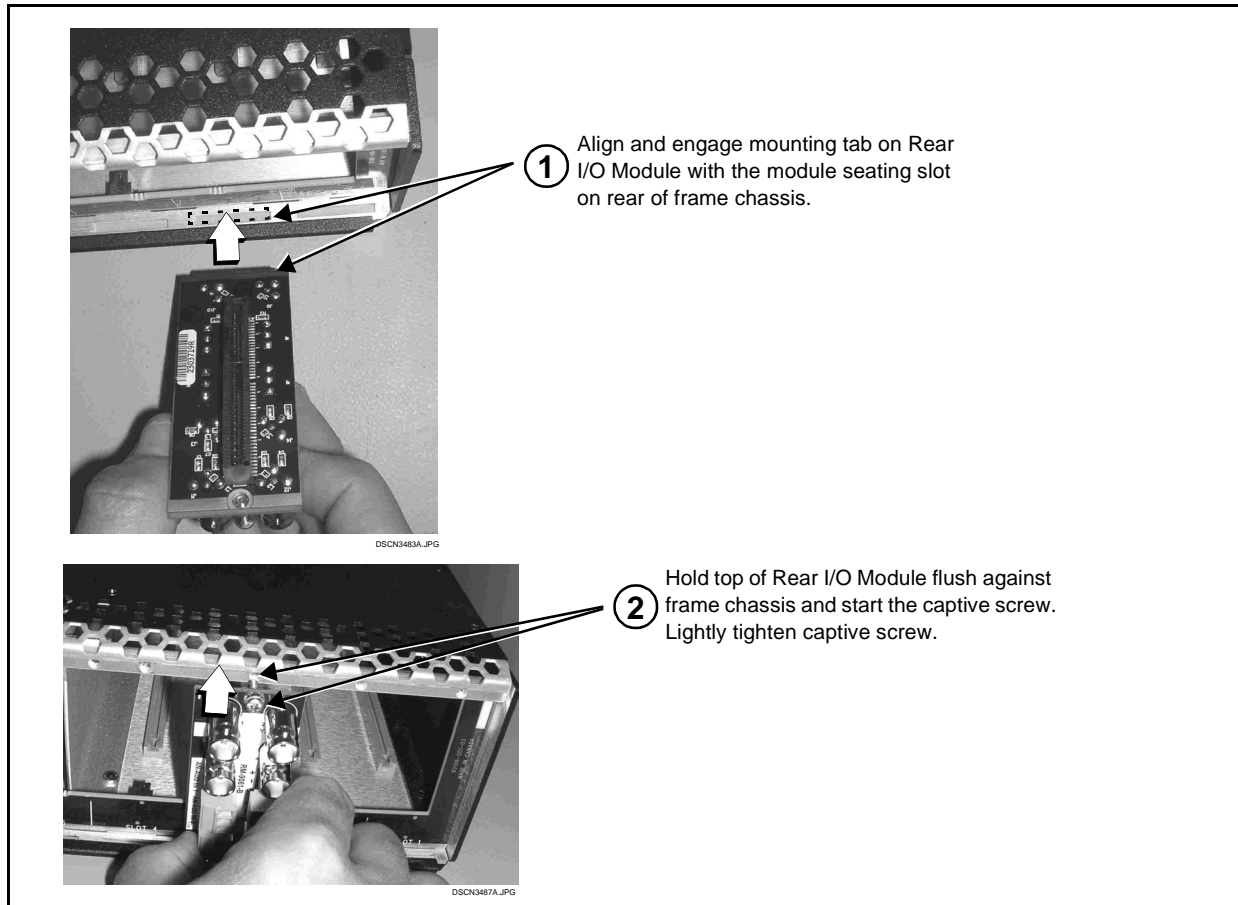


Figure 2-2 Rear I/O Module Installation

9910DA-AV-EQ Rear I/O Modules

Table 2-2 shows and describes the full assortment of Rear I/O Modules specifically for use with the 9910DA-AV-EQ.

Table 2-2 9910DA-AV-EQ Rear I/O Modules

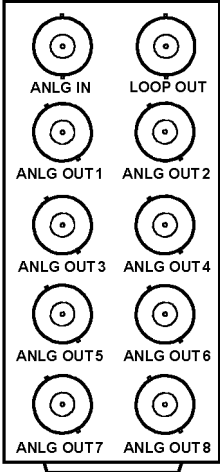
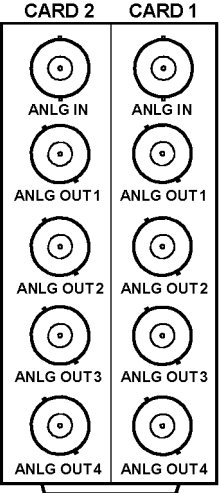
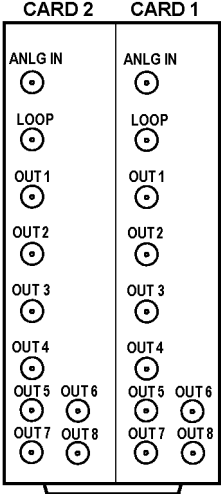
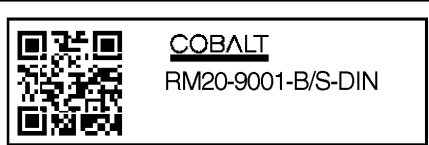
9910DA-AV-EQ Rear I/O Module	Description
<p>RM20-9910AV-B</p>  <p>The diagram shows a vertical rear panel with ten circular connectors arranged in two columns. The left column contains: ANLG IN, ANLG OUT 1, ANLG OUT 3, ANLG OUT 5, and ANLG OUT 7. The right column contains: LOOP OUT, ANLG OUT 2, ANLG OUT 4, ANLG OUT 6, and ANLG OUT 8.</p>	<p>Provides the following connections:</p> <ul style="list-style-type: none"> • Analog video input (ANLG IN) • One input looping output (LOOP OUT) • Eight DA outputs (ANLG OUT 1 thru ANLG OUT 8) <p>Note: Loop/Term jumper must be set to Loop position in order to use looping output.</p>
<p>RM20-9910AV-A/S</p>  <p>The diagram shows a vertical rear panel with two columns of connectors. The left column is labeled 'CARD 2' and the right column is labeled 'CARD 1'. Each column contains: ANLG IN, ANLG OUT 1, ANLG OUT 2, ANLG OUT 3, and ANLG OUT 4.</p>	<p>Split Rear Module. Provides each of the following connections for two 9910DA cards:</p> <ul style="list-style-type: none"> • Analog video input (ANLG IN) • Four DA outputs (ANLG OUT 1 thru ANLG OUT 4) <p>Note:</p> <ul style="list-style-type: none"> • Loop/Term jumper must be set to Term position when using this rear module. • This rear module has shield connectors tied to GND and can only be used in the typical single-ended input mode; the Differential position has no effect when using this rear module.

Table 2-2 9910DA-AV-EQ Rear I/O Modules — continued

9910DA-AV-EQ Rear I/O Module	Description
<p>RM20-9910AV-B/S</p> 	<p>Split Rear Module. Provides each of the following connections for two 9910DA cards:</p> <ul style="list-style-type: none"> • Analog video input (ANLG IN) • One input looping output (LOOP OUT) • Eight DA outputs (ANLG OUT 1 thru ANLG OUT 8) <p>Note:</p> <ul style="list-style-type: none"> • Loop/Term jumper must be set to Term position when using this rear module. • This rear module has shield connectors tied to GND and can only be used in the typical single-ended input mode; the Differential position has no effect when using this rear module. <p>Note: Available equipped with High-Density BNC (HDBNC) or DIN1.0/2.3 connectors as: RM20-9910DA-B/S-HDBNC or RM20-9910DA-B/S-DIN, respectively.</p>
<div style="display: flex; align-items: center;">  <div style="margin-left: 20px;"> <p>Due to the density of connector placement on Rear Modules using high-density connectors (e.g., RM20-9001-B/S-DIN), these modules use a QR barcode label instead a regular label. Simply scan the image with a smart phone and a link to the rear module label (as shown in our catalog) will appear. (Smart phone must have a QR reader app such as QuickMark QR Code Reader or equivalent.)</p> <p>Not all devices may be able to acquire the image. If this occurs, use the device to access the web page for card/rear module to view the diagram.</p> </div> </div> <p style="text-align: center;">**SAMPLE-NOT FOR USE**</p>	

Card Gain and EQ Adjustment Controls

These controls should be adjusted as desired when the card is up and receiving an input, with an output applied to an intended destination.

Adjust these controls as described in Chapter 3. Operating Instructions, Card-Edge Controls and Indicators (p. 3-3).

This page intentionally blank

Operating Instructions

Overview

This chapter contains the following information:

- Accessing the 9910DA-AV-EQ Card via Remote Control (p. 3-1)
- Checking 9910DA-AV-EQ Card Information and Status (p. 3-2)
- Card-Edge Controls and Indicators (p. 3-3)
- Troubleshooting (p. 3-4)

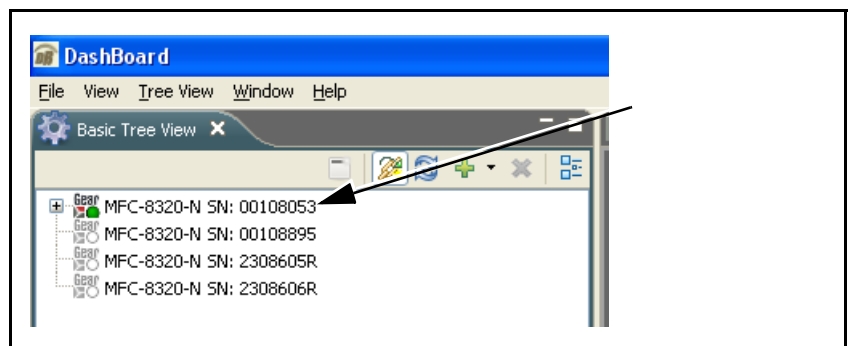
Accessing the 9910DA-AV-EQ Card via Remote Control

The 9910DA-AV-EQ card can be remote monitored via DashBoard™ or Cobalt® Remote Control Panel. Access the 9910DA-AV-EQ card using DashBoard™ or Cobalt® Remote Control Panel as described below.

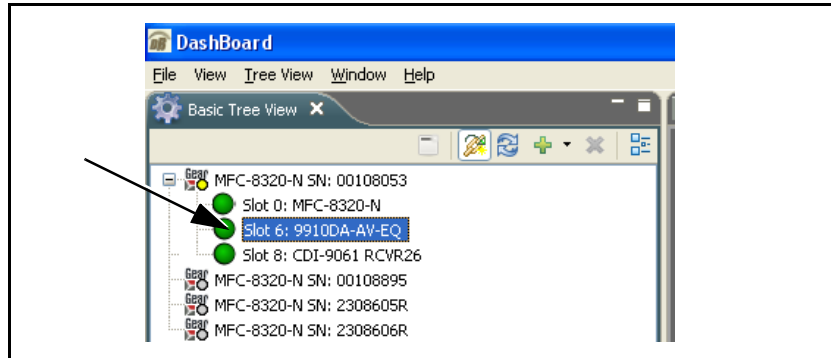
Note: Remote control only shows card status. Remote control is not required for card parametric or operating setup or control.

Accessing the 9910DA-AV-EQ Card Using DashBoard™

1. On the computer connected to the frame LAN, open DashBoard™.
2. As shown below, in the left side Basic View Tree locate the Network Controller Card associated with the frame containing the 9910DA-AV-EQ card to be accessed (in this example, “MFC-8320-N SN: 00108053”).



- As shown below, expand the tree to access the cards within the frame. Click on the card to be accessed (in this example, “Slot 6: 9910DA-AV-EQ”).



Checking 9910DA-AV-EQ Card Information and Status

The operating status of the 9910DA-AV-EQ card can be checked using Dashboard™. Figure 3-1 shows and describes the 9910DA-AV-EQ card information screen using Dashboard™.

The **Tree View** shows the cards seen by Dashboard™. In this example, Network Controller Card is hosting a 9910DA-AV-EQ card in slot 6.

Card Info Display
This display shows the 9910DA-AV-EQ card product details and operating status (including current and previous video format received, as well as card power/temperature status)

The Rear Module indicator shows the Cobalt mfg PN of the currently-installed rear module and compatibility of the rear module with this card (with green indicating a compatible rear module)

Figure 3-1 9910DA-AV-EQ Card Info/Status Utility

Card-Edge Controls and Indicators

Figure 3-2 shows card edge controls and indicators, and provides information about optimizing control settings for various use cases of the card.

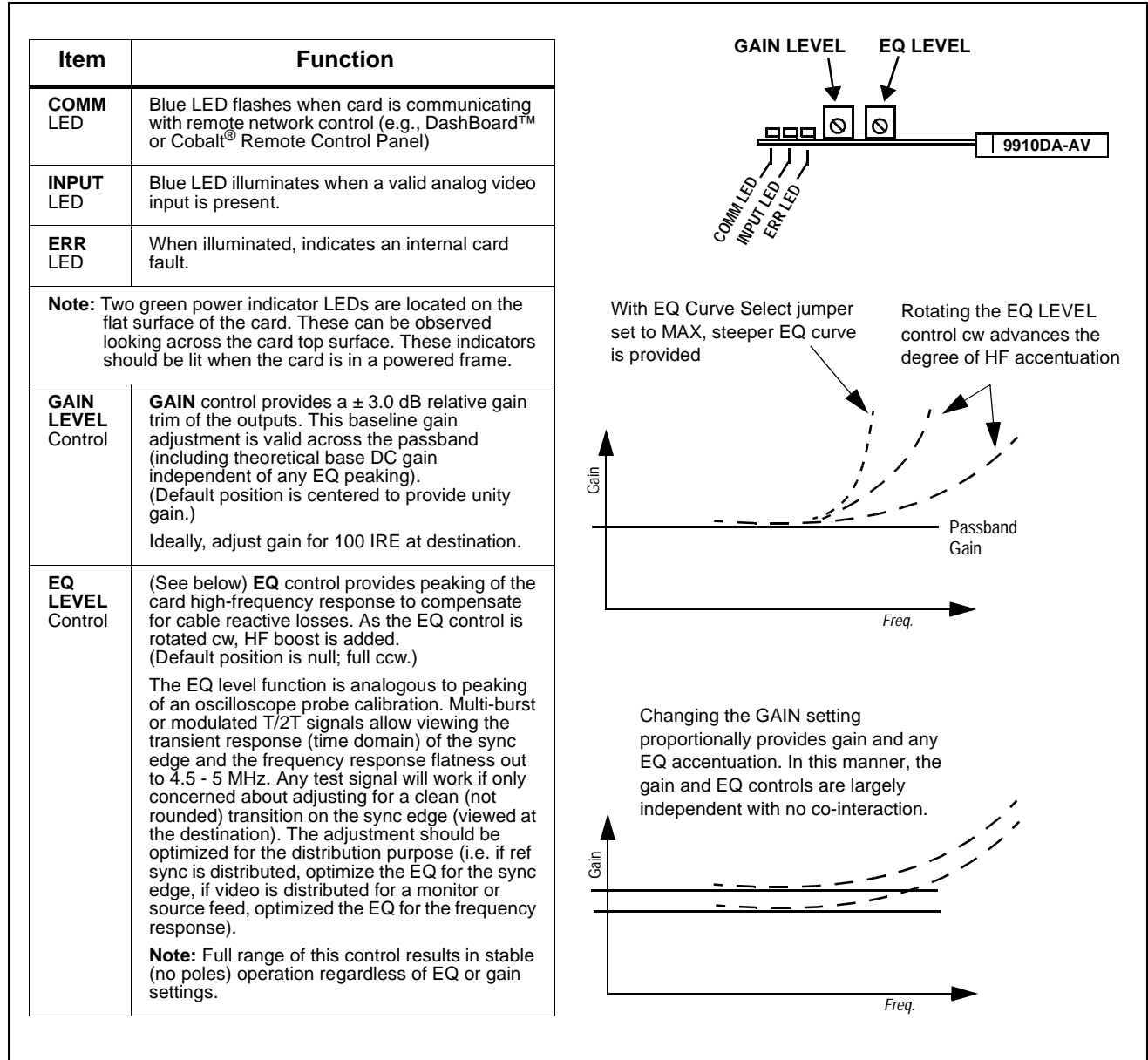



Figure 3-2 9910DA-AV-EQ Card-Edge Controls and Indicators

Troubleshooting

Basic Troubleshooting Checks

Failures of a general nature (affecting many cards and/or functions simultaneously), or gross inoperability errors are best addressed first by performing basic checks before proceeding further. Table 3-1 provides basic system checks that typically locate the source of most general problems. If required and applicable, perform further troubleshooting in accordance with the other troubleshooting tables in this section.

Table 3-1 Basic Troubleshooting Checks

Item	Checks
Verify power presence and characteristics	<ul style="list-style-type: none"> • On both the frame Network Controller Card and the 9910DA-AV-EQ, in all cases when power is being properly supplied there is always at least one indicator illuminated. Any card showing no illuminated indicators should be cause for concern. • Check the Power Consumed indication for the 9910DA-AV-EQ card. This can be observed using the DashBoard™ Card Info pane. <ul style="list-style-type: none"> • If display shows no power being consumed, either the frame power supply, connections, or the 9910DA-AV-EQ card itself is defective. • If display shows excessive power being consumed (see Technical Specifications (p. 1-7) in Chapter 1, “Introduction”), the 9910DA-AV-EQ card may be defective.
Check Cable connection secureness and connecting points	<p>Make certain all cable connections are fully secure (including coaxial cable attachment to cable ferrules on BNC connectors). Also, make certain all connecting points are as intended. Make certain the selected connecting points correlate to the intended card inputs and/or outputs. Cabling mistakes are especially easy to make when working with large I/O modules.</p>
Card seating within slots	<p>Make certain all cards are properly seated within its frame slot. (It is best to assure proper seating by ejecting the card and reseating it again.)</p>
Check status indicators and displays	<p>On both DashBoard™ and the 9910DA-AV-EQ card edge indicators, red indications signify an error condition. If a status indicator signifies an error, proceed to the following tables in this section for further action.</p>
Check jumper settings	<p>Refer to Chapter 2, Setup and Installation. Make certain jumpers are set as appropriate for type of signal and use the card is carrying.</p> <p> Clamping is intended for use only with SD black-burst (bi-level) sync signals and may result in loss of output if used with HD tri-level input signals. If inputs other than SD black burst may be present, do not enable clamping. Clamping is not required for any input condition where excessive hum or grounding issues are not present.</p>
Troubleshoot by substitution	<p>All cards within the frame can be hot-swapped, replacing a suspect card or module with a known-good item.</p>

Troubleshooting Network/Remote Control Errors

Refer to Cobalt® reference guide “Remote Control User Guide” (PN 9000RCS-RM) for network/remote control troubleshooting information.

In Case of Problems

Should any problem arise with this product that was not solved by the information in this section, please contact the Cobalt Digital Inc. Technical Support Department.

If required, a Return Material Authorization number (RMA) will be issued to you, as well as specific shipping instructions. If required, a temporary replacement item will be made available at a nominal charge. Any shipping costs incurred are the customer’s responsibility. All products shipped to you from Cobalt Digital Inc. will be shipped collect.

The Cobalt Digital Inc. Technical Support Department will continue to provide advice on any product manufactured by Cobalt Digital Inc., beyond the warranty period without charge, for the life of the product.

See Contact Cobalt Digital Inc. (p. 1-9) in Chapter 1, “Introduction“ for contact information.

This page intentionally blank



Cobalt Digital Inc.

2406 E. University Ave.
Urbana, IL 61802
Voice 217.344.1243 • Fax 217.344.1245
www.cobaltdigital.com