

Kramer Electronics, Ltd.



USER MANUAL

Model:

VP-417

Video to PC/HD/DVI Scaler

Contents

1	Introduction	1
2	Getting Started	1
2.1	Quick Start	2
3	Overview	3
4	Defining the VP-417 Video to PC/HD/DVI Scaler	4
5	Connecting the VP-417 Video to PC/HD/DVI Scaler	5
6	Operating the VP-417 Video to PC/HD/DVI Scaler	6
6.1	Using the Front Panel Buttons	6
6.2	Using the OSD	7
6.2.1	The Main Menu	7
6.2.2	The OSD Settings Submenu	8
6.3	Native Output Resolution	8
7	Technical Specifications	9

Figures

Figure 1:	VP-417 Video to PC/HD/DVI Scaler Front Panel	4
Figure 2:	VP-417 Video to PC/HD/DVI Scaler Rear Panel	5
Figure 3:	Connecting the VP-417 Video to PC/HD/DVI Scaler	5

Tables

Table 1:	VP-417 Video to PC/HD/DVI Scaler Front Panel Features	4
Table 2:	VP-417 Video to PC/HD/DVI Scaler Rear Panel Features	5
Table 3:	15-pin HD Pinout for HD	6
Table 4:	The Main Menu Parameters and Functions	7
Table 5:	The OSD Submenu Parameters and Functions	8
Table 6:	Technical Specifications of the VP-417 Video to PC/HD/DVI Scaler	9

1 Introduction

Welcome to Kramer Electronics! Since 1981, Kramer Electronics has been providing a world of unique, creative, and affordable solutions to the vast range of problems that confront the video, audio, presentation, and broadcasting professional on a daily basis. In recent years, we have redesigned and upgraded most of our line, making the best even better! Our 1,000-plus different models now appear in 11 groups¹ that are clearly defined by function.

Thank you for purchasing your Kramer **VP-417 Video to PC/HD/DVI Scaler** which is ideal for:

- Projection systems in conference rooms, boardrooms, hotels and houses of worship
- Home theater up-scaling

The package includes the following items:

- **VP-417 Video to PC/HD/DVI Scaler**
- Power adapter (5V DC output)
- This user manual²

2 Getting Started

We recommend that you:

- Unpack the equipment carefully and save the original box and packaging materials for possible future shipment
- Review the contents of this user manual
- Use Kramer high-performance high-resolution cables³

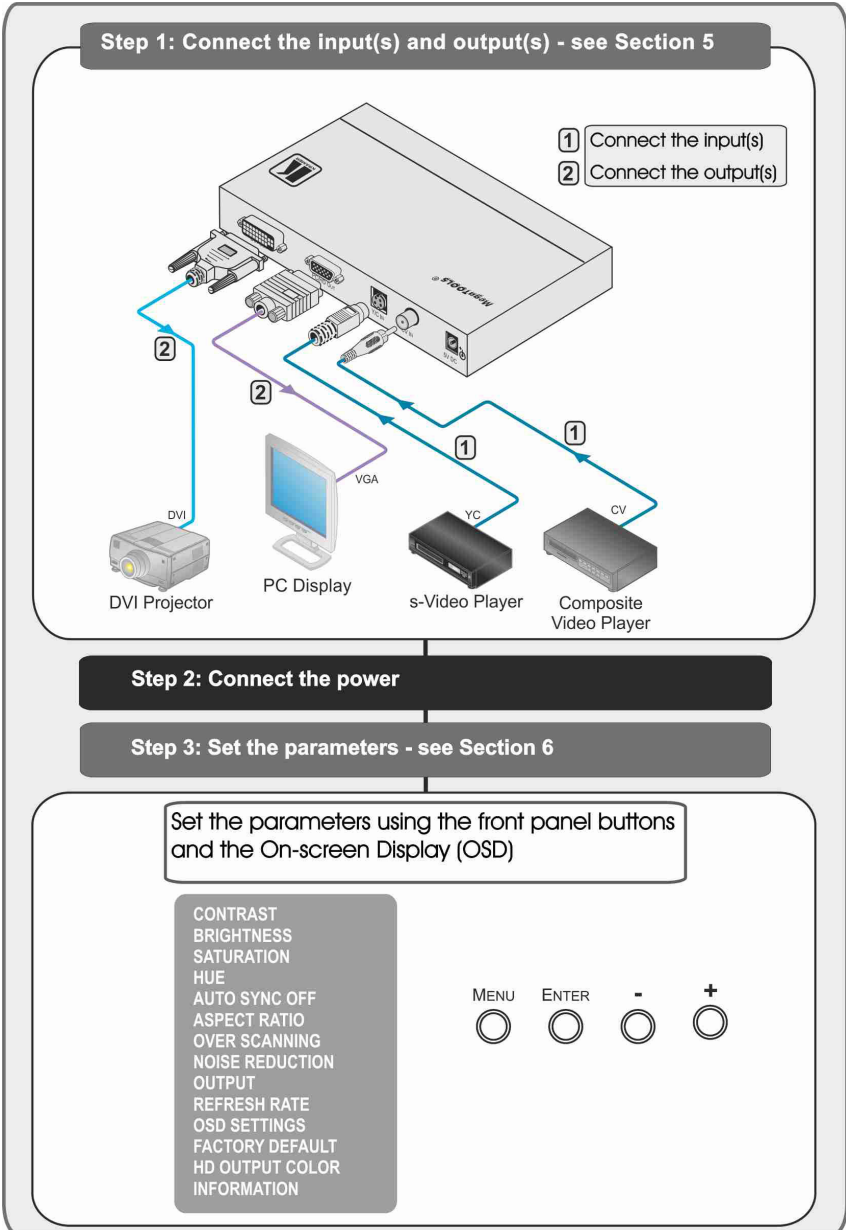
1 GROUP 1: Distribution Amplifiers; GROUP 2: Switchers and Matrix Switchers; GROUP 3: Control Systems; GROUP 4: Format/Standards Converters; GROUP 5: Range Extenders and Repeaters; GROUP 6: Specialty AV Products; GROUP 7: Scan Converters and Scalers; GROUP 8: Cables and Connectors; GROUP 9: Room Connectivity; GROUP 10: Accessories and Rack Adapters; GROUP 11: Sierra Products

2 Download up-to-date Kramer user manuals from <http://www.kramerelectronics.com>

3 The complete list of Kramer cables is on <http://www.kramerelectronics.com>

2.1 Quick Start

This quick start chart summarizes the basic setup and operation steps.



3 Overview

The Kramer **VP-417 Video to PC/HD/DVI Scaler** is a high-performance digital scaler for computer graphics and HDTV signals. It up-scales composite and Y/C (s-Video) signals to resolutions up to WUXGA (HD). The following output resolutions are supported:

- **PC:** XGA (1024x768), WXGA (1280x800), SXGA (1280x1024), UXGA (1600x1200), WUXGA (1920x1200)
- **HDTV:** 480p, 576p, 720p @50/60Hz, 1080i @50/60Hz, 1080p @50/60Hz


The **VP-417 Video to PC/HD/DVI Scaler** also features:

- An On-Screen Display (OSD) for easy setup and adjustment, accessible via the front-panel buttons
- A built-in ProcAmp for convenient signal adjustment
- A non-volatile memory that retains the last settings used
- RGBHV (PC) and DVI video outputs
- An external +5V DC power source, making it suitable for field operation

You can operate your **VP-417** directly via the front panel push buttons and the OSD.

To achieve the best performance:

- Use only good quality connection cables¹ to avoid interference, deterioration in signal quality due to poor matching, and elevated noise levels (often associated with low quality cables)
- Avoid interference from neighboring electrical appliances that may adversely influence signal quality and position your Kramer **VP-417** away from moisture, excessive sunlight and dust

	Caution: No operator serviceable parts inside unit
	Warning: Use only the Kramer Electronics input power wall adapter that is provided with the unit
	Warning: Disconnect power and unplug unit from wall before installing or removing the device or servicing unit

¹ Available from Kramer Electronics on our Web site at <http://www.kramerelectronics.com>

4 Defining the VP-417 Video to PC/HD/DVI Scaler

[Figure 1](#) and [Table 1](#) define the **VP-417 Video to PC/HD/DVI Scaler** front panel features.

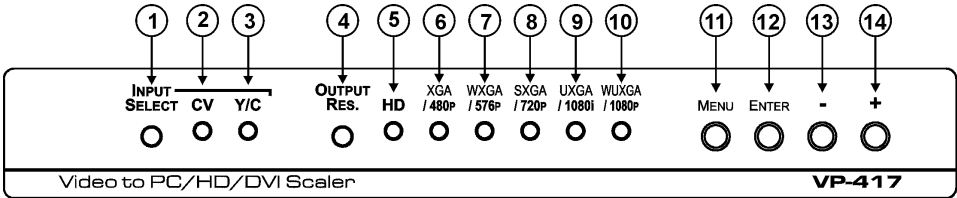


Figure 1: VP-417 Video to PC/HD/DVI Scaler Front Panel

Table 1: VP-417 Video to PC/HD/DVI Scaler Front Panel Features

#	Feature	Function	
1	INPUT SELECT	Input selector button Press to toggle between the CV or the Y/C (s-Video) input	
2	CV Input LED	Input source selection LEDs Lights green when the CV input is selected	
3	Y/C Input LED	Input source selection LEDs Lights green when the Y/C input is selected	
4	OUTPUT RES.	Output resolution selector button Press to display (OSD) the current output resolution. Press again to cycle through the output resolutions (see Section 6.1). Individual LEDs indicate the current resolution	
5	HD LED	Output resolution LEDs Lights blue to indicate that the (HD) 480p to 1080p range ¹ is selected. LED is off when the (PC) XGA to WUXGA range ² is selected	
6	XGA/480p LED		Lights red when XGA or 480p is selected
7	WXGA/576p LED		Lights red when WXGA or 576p is selected
8	SXGA/720p LED		Lights red when SXGA or 720p is selected
9	UXGA/1080i LED		Lights red when UXGA or 1080i is selected
10	WUXGA/1080p LED	Lights red when WUXGA or 1080p is selected	
11	MENU button	Press to enter/exit the menu	
12	ENTER button	Press to select the highlighted menu item	
13	- Button	OSD (On-screen Display) buttons Press to step down through the menu options or to decrement a parameter value	
14	+ Button		Press to step up through the menu options or to increment a parameter value

[Figure 2](#) and [Table 2](#) define the **VP-417 Video to PC/HD/DVI Scaler** rear panel features.

1 The resolution printed on the bottom row of text above the resolution LEDs

2 The resolution printed on the upper row of text above the resolution LEDs

Connecting the VP-417 Video to PC/HD/DVI Scaler

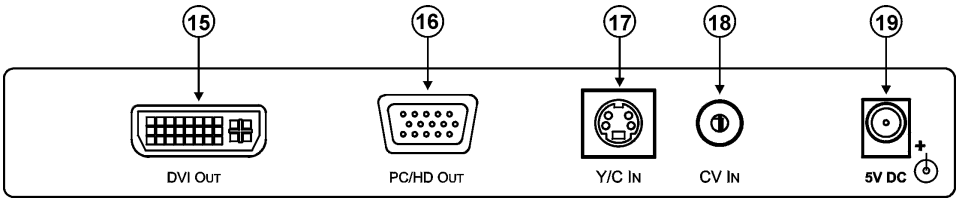


Figure 2: VP-417 Video to PC/HD/DVI Scaler Rear Panel

Table 2: VP-417 Video to PC/HD/DVI Scaler Rear Panel Features

#	Feature	Function	
15	DVI OUT Connector	Outputs	Connect to the DVI acceptor
16	PC/HD OUT 15-pin HD Connector		Connect to the PC, RGBHV or HD acceptor
17	Y/C IN 4-pin s-Video Connector	Inputs	Connect to the s-Video source
18	CV IN RCA Connector		Connect to the composite video source
19	5V DC	Connect to the +5V DC power adapter, center pin positive	

5 Connecting the VP-417 Video to PC/HD/DVI Scaler

To connect the VP-417, as illustrated in the example in [Figure 3](#):

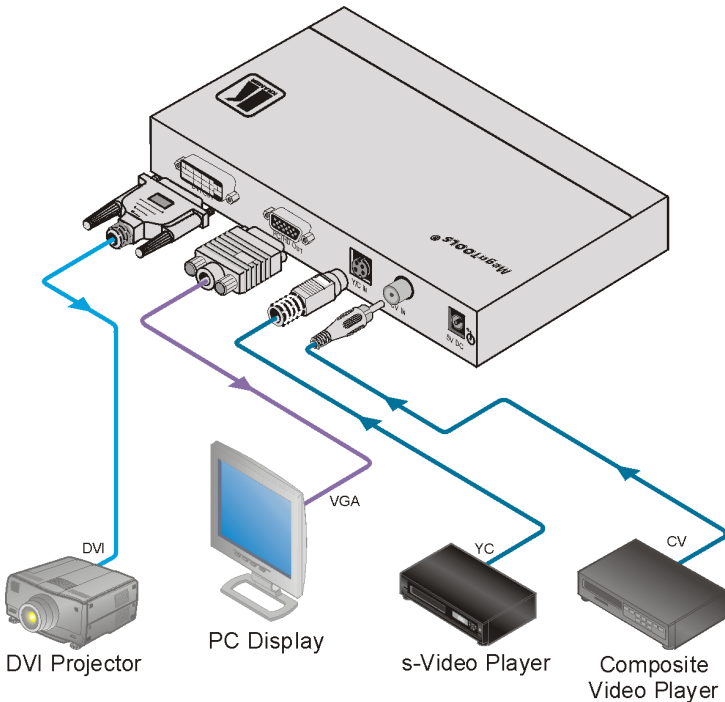


Figure 3: Connecting the VP-417 Video to PC/HD/DVI Scaler

1. Connect a CV source (for example, a composite video player) to the CV IN connector.
2. Connect a Y/C source (for example, an s-Video player) to the Y/C IN connector.
3. Connect the PC/HD OUT 15-pin HD connector to a PC/HD acceptor (for example, a PC display or HDTV acceptor) as follows:
 - When connecting to a VGA acceptor (RGBHV), connect to the acceptor's VGA connector
 - When connecting to a component acceptor (YPbPr), connect as shown in [Table 3](#)

Table 3: 15-pin HD Pinout for HD

PIN #	Signal
1	Pr
2	Y
3	Pb
6, 7, 8	Ground

4. Connect the DVI OUT connector to a DVI¹ acceptor (for example, a DVI projector).
5. Connect the 5V DC power adapter to the power socket and to the mains electricity (not shown in [Figure 3](#)).

6 Operating the VP-417 Video to PC/HD/DVI Scaler

The VP-417 is operated directly via the front panel buttons and via the OSD (On-screen Display) menu (see [Section 6.2](#)).

6.1 Using the Front Panel Buttons

During normal operation (without the OSD), the front panel buttons operate in the following manner:

- **INPUT SELECT:** Toggles between the CV and Y/C inputs
- **OUTPUT RESOLUTION :** Cycles through the following output resolutions after displaying the current output resolution;
 - HD LED off: XGA, WXGA, SXGA, UXGA and WUXGA
 - HD LED on: 480p, 576p, 720p, 1080i and 1080p
- **MENU:** Opens the OSD main menu (see [Section 6.2](#)). Press a second time to close the OSD
- **ENTER:** Selects the highlighted menu item or parameter

¹ Or HDMI

6.2 Using the OSD

You can use the OSD to set a wide variety of parameters.

When using the OSD, the front panel buttons operate in the following manner:

- **MENU**: Opens the OSD main menu (see [Table 4](#)). Press a second time to close the OSD
- **ENTER**: Selects the highlighted menu option or parameter
- **-**: Steps up through the menu options or decrements a parameter value
- **+**: Steps down through the menu options or increments a parameter value

Example of Setting a Parameter

The following steps are an example of setting parameters to increase the saturation on the display:

1. From normal operation¹, press MENU.
The OSD Main Menu appears on the screen.
2. Press the + or - button to highlight SATURATION.
SATURATION changes to green when highlighted.
3. Press ENTER.
The saturation parameter changes to red.
4. Press the + button to increase the value or the - button to decrease the value.
5. Press ENTER to set the value.
The saturation parameter changes to white.
6. To return to normal operation, either:
 - Press MENU
 - Wait until the menu times out automatically

6.2.1 The Main Menu

[Table 4](#) defines the Main Menu parameters and functions.

Table 4: The Main Menu Parameters and Functions

Parameter	Function	Value Range	Factory Default
CONTRAST	Adjusts the contrast	0 to 255	128
BRIGHTNESS	Adjusts the brightness	0 to 255	128
SATURATION	Adjusts the saturation	0 to 255	128
HUE	Adjusts the hue	-128 to 128 (Not available in PAL)	000
AUTO SYNC OFF	Turns auto sync on/off ²	ON/OFF	OFF
ASPECT RATIO	Adjusts the aspect ratio of the output	FULL/4:3/16:9	FULL
OVER SCANNING	Adjusts the over scanning value	OFF/5%/10%/15%/20%	5%
NOISE REDUCTION	Adjusts the noise reduction filter	Off/Typ/Min/Max	Typ

¹ That is, the user is not within the OSD menu

² When on, the VP-417 disables its output syncs after a few minutes when no input source is detected. This feature is useful for applications where the projector should automatically shut down when no source is present

Parameter	Function	Value Range	Factory Default
OUTPUT	Adjusts the output resolution	480p, 576p, 720p, 1080i, 1080p, VGA, SVGA, XGA, 1280x800, WXGA, WSXGA, SXGA, 1400x1050, 1680x1050, UXGA, WUXGA, 1920x1080, Native (see Section 6.3)	XGA
REFRESH RATE	Sets the output refresh rate	FOLLOW/50Hz/60Hz (50Hz/60Hz not available with 480p and 576p resolutions)	FOLLOW
OSD SETTINGS	Submenu— Adjusts On-screen Display parameters (see Section 6.2.2)		
FACTORY DEFAULT	Reverts all parameters to factory defaults		
HD OUTPUT COLOR	Sets the color format of the output resolution (see note below)	YPbPr, RGBHV	RGBHV
INFORMATION	Displays input source, output resolution and firmware version		

Note: If HD OUPUT COLOR is set to YPbPr, when an HD resolution is selected (for example, 480P/576p), the color space will be YPbPr. For RGBHV resolutions (for example, 1280x1024), the output is always in the RGBHV color space.

6.2.2 The OSD Settings Submenu

The OSD Settings Submenu allows you to adjust the location, timeout and transparency of the OSD (see [Table 5](#)).

Table 5: The OSD Submenu Parameters and Functions

Parameter	Function	Value Range	Factory Default
DISPLAY	Displays the input and output information	Info—Displays for a few seconds On—Always on Off—Always OFF	
H POSITION	Adjusts the OSD horizontal position	0 to 42	007
V POSITION	Adjusts the OSD vertical position	0 to 24	005
TIMEOUT	Adjusts the OSD menu timeout (in seconds)	Off, 3 to 30	005
TRANSPARENCY	Adjusts the OSD transparency	0 to 15	010
EXIT	Exits the OSD Settings submenu to the Main Menu (see Table 4)		

6.3 Native Output Resolution

When the output resolution is set to Native, the **VP-417** reads the EDID of the display and sets the output resolution accordingly.

7 Technical Specifications

[Table 6](#) lists the technical specifications¹ of the **VP-417**.

Table 6: Technical Specifications of the VP-417 Video to PC/HD/DVI Scaler

INPUTS:	1 Y/C (s-Video) 1Vpp (Y); 0.3Vpp (C)/75Ω on a 4-pin connector 1 CV 1Vpp/75Ω on an RCA connector
OUTPUTS:	1 Digital Video on a DVI-I connector 1 VGA on a 15-pin HD (F) connector
OUTPUT RESOLUTIONS ² :	PC: VGA, SVGA, XGA, 1280x800, WXGA, WSXGA, SXGA, 1400x1050, 1680x1050, UXGA, WUXGA, 1920x1080, Native HDTV: 480p, 576p, 720p @50/60Hz, 1080i @50/60Hz, 1080p @50/60Hz
OUTPUT REFRESH RATE:	60Hz for computer graphics resolutions, 50/60Hz for HDTV resolutions
CONTROLS:	Input selection, Output resolution selection, Menu, Enter, – and + buttons
POWER SOURCE:	5V DC, 560mA
DIMENSIONS:	18.8cm x 11.4cm x 2.4cm (7.4" x 4.5" x 1.0") W, D, H
WEIGHT:	0.66kg (1.45lbs) approx.
ACCESSORIES:	Power supply
OPTIONS	RK-T2B 19" rack adapter

¹ Specifications are subject to change without notice

² All resolutions are outputted @ 60Hz, except where noted

LIMITED WARRANTY

Kramer Electronics (hereafter *Kramer*) warrants this product free from defects in material and workmanship under the following terms.

HOW LONG IS THE WARRANTY

Labor and parts are warranted for three years from the date of the first customer purchase.

WHO IS PROTECTED?

Only the first purchase customer may enforce this warranty.

WHAT IS COVERED AND WHAT IS NOT COVERED

Except as below, this warranty covers all defects in material or workmanship in this product. The following are not covered by the warranty:

1. Any product which is not distributed by Kramer, or which is not purchased from an authorized Kramer dealer. If you are uncertain as to whether a dealer is authorized, please contact Kramer at one of the agents listed in the Web site www.kramerelectronics.com.
2. Any product, on which the serial number has been defaced, modified or removed, or on which the WARRANTY VOID IF TAMPERED sticker has been torn, reattached, removed or otherwise interfered with.
3. Damage, deterioration or malfunction resulting from:
 - i) Accident, misuse, abuse, neglect, fire, water, lightning or other acts of nature
 - ii) Product modification, or failure to follow instructions supplied with the product
 - iii) Repair or attempted repair by anyone not authorized by Kramer
 - iv) Any shipment of the product (claims must be presented to the carrier)
 - v) Removal or installation of the product
 - vi) Any other cause, which does not relate to a product defect
 - vii) Cartons, equipment enclosures, cables or accessories used in conjunction with the product

WHAT WE WILL PAY FOR AND WHAT WE WILL NOT PAY FOR

We will pay labor and material expenses for covered items. We will not pay for the following:

1. Removal or installations charges.
2. Costs of initial technical adjustments (set-up), including adjustment of user controls or programming. These costs are the responsibility of the Kramer dealer from whom the product was purchased.
3. Shipping charges.

HOW YOU CAN GET WARRANTY SERVICE

1. To obtain service on you product, you must take or ship it prepaid to any authorized Kramer service center.
2. Whenever warranty service is required, the original dated invoice (or a copy) must be presented as proof of warranty coverage, and should be included in any shipment of the product. Please also include in any mailing a contact name, company, address, and a description of the problem(s).
3. For the name of the nearest Kramer authorized service center, consult your authorized dealer.

LIMITATION OF IMPLIED WARRANTIES

All implied warranties, including warranties of merchantability and fitness for a particular purpose, are limited in duration to the length of this warranty.

EXCLUSION OF DAMAGES

The liability of Kramer for any effective products is limited to the repair or replacement of the product at our option. Kramer shall not be liable for:

1. Damage to other property caused by defects in this product, damages based upon inconvenience, loss of use of the product, loss of time, commercial loss; or:
2. Any other damages, whether incidental, consequential or otherwise. Some countries may not allow limitations on how long an implied warranty lasts and/or do not allow the exclusion or limitation of incidental or consequential damages, so the above limitations and exclusions may not apply to you.

This warranty gives you specific legal rights, and you may also have other rights, which vary from place to place.

NOTE: All products returned to Kramer for service must have prior approval. This may be obtained from your dealer.

This equipment has been tested to determine compliance with the requirements of:

- EN-50081: "Electromagnetic compatibility (EMC);
generic emission standard.
Part 1: Residential, commercial and light industry"
- EN-50082: "Electromagnetic compatibility (EMC) generic immunity standard.
Part 1: Residential, commercial and light industry environment".
- CFR-47: FCC* Rules and Regulations:
Part 15: "Radio frequency devices
Subpart B Unintentional radiators"

CAUTION!

- ☒ Servicing the machines can only be done by an authorized Kramer technician. Any user who makes changes or modifications to the unit without the expressed approval of the manufacturer will void user authority to operate the equipment.
- ☒ Use the supplied DC power supply to feed power to the machine.
- ☒ Please use recommended interconnection cables to connect the machine to other components.

* FCC and CE approved using STP cable (for twisted pair products)



For the latest information on our products and a list of Kramer distributors visit www.kramerelectronics.com where updates to this user manual may be found. We welcome your questions, comments and feedback.



Caution

Safety Warning:

Disconnect the unit from the power supply before opening/servicing.



Kramer Electronics, Ltd.

Web site: www.kramerelectronics.com

E-mail: info@kramereel.com

P/N: 2900-000633 REV 2