



## INSTALLATION AND OPERATION MANUAL

### EZ-PH1

Model numbers:  
EZ-PH1 includes power supply with North American plug  
EZ-PH1X includes worldwide power supply (specify plug)

#### Stereo Phono Preamp



RDL EZ Series products provide the highest level of value to A/V professionals and A/V users who demand professional quality. For long-term performance, quality and value, you have made the EZ choice. EZ products are made in the USA by RDL, the inventor of application-specific modules bringing decades of experience as the world's leading manufacturer of high-reliability performance products to the A/V industry. Visit the RDL website for hundreds of professional A/V products made in the USA by RDL.



[www.rdlnet.com](http://www.rdlnet.com)

**Decades of Performance, Quality and Value**

---

RDL • 659 N. 6th Street • Prescott, AZ • USA 86301 • Sales: 800-281-2683 • 928-443-9391  
Tech Support: 800-933-1780 • 928-778-3554 • RDL Europe Sales & Support: (31) 20-6238-983

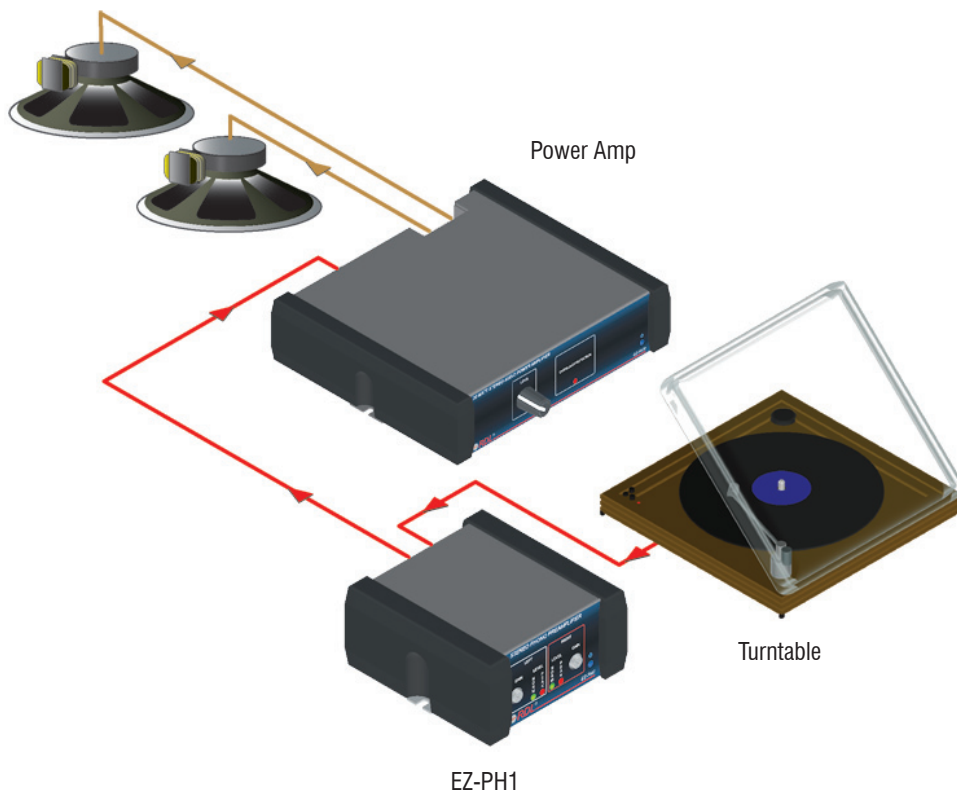
# EZ-PH1

## Stereo Phono Preamplifier

- Phono Input on Gold-Plated RCA Jacks
- Line Output on Gold-Plated RCA Jacks
- Front-Panel GAIN Trimmer for Each Channel
- Dual-LED VU Meter for Each Channel
- RIAA Equalization
- Turntable Grounding Screw Provided

The EZ-PH1 is a stereo phono preamplifier with front-panel volume trimmers and audio level metering. Stereo RCA jacks and a grounding screw are provided on the rear panel for connecting a turntable tone arm. The input is preamplified with RIAA equalization to feed the line output RCA jacks. Left and right channel front-panel LED VU metering facilitates adjustment of the level trimmers. The EZ-PH1 is ideal to add phono inputs to mixers and amplifiers with line inputs, or for direct connection to recording decks for dubbing records onto other media. It is used in clubs, educational facilities, homes and studios.

## TYPICAL APPLICATION



[www.rdl.net.com](http://www.rdl.net.com) • • • [www.rdlez.com](http://www.rdlez.com)

**STEREO OUTPUT VU METERS**

LEFT and RIGHT LED VU meters monitor the unbalanced outputs for proper -10 dBV level. With audio present, the variable intensity green LED should be as bright as possible with the red LED flashing occasionally. (The red LED flashes when the output level exceeds -10 dBV.)

**GAIN ADJUSTMENT**

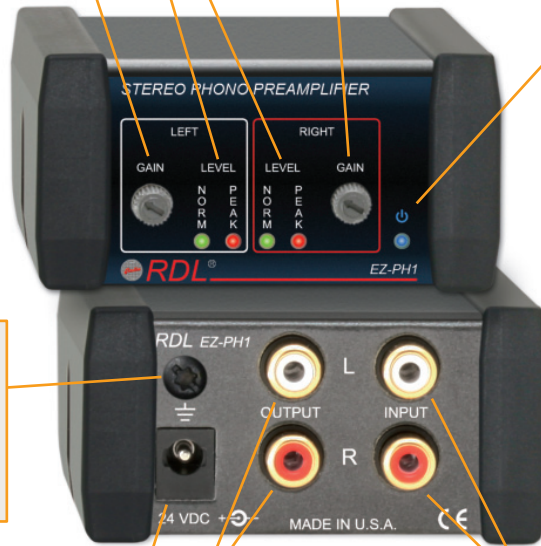
Adjust LEFT GAIN for proper level on the LEVEL meter.

**GAIN ADJUSTMENT**

Adjust RIGHT GAIN for proper level on the LEVEL meter.

**POWER INDICATOR**

Glowes blue when the product is connected to a valid power source.



**GROUND SCREW**

Connect tone-arm shield (if provided) to case using the grounding screw. Failure to connect the tone-arm ground may cause hum.

**24 VDC POWER INPUT**

Insert plug from power supply. Rotate 1/4 turn clockwise to lock.

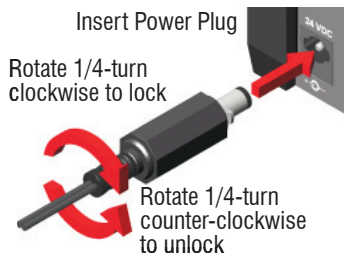
**AUDIO OUTPUT**

Connect stereo OUTPUT to equipment with an unbalanced stereo input.

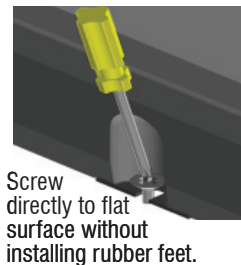
**PHONO INPUT**

Connect a stereo turntable tone-arm cartridge output to the INPUT.

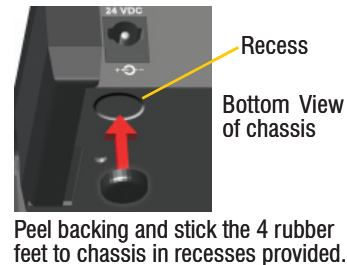
**POWER CONNECTION**



**FIXED MOUNTING**



**RUBBER FEET ATTACHMENT**



---

**SELECTED MOUNTING ACCESSORIES** Complete accessory listing available at: [rdlez.com](http://rdlez.com)

## EZ-RA6

**Rack Adapter** for 6 Increments of 1/6 Rack Width



## EZ-CC6

**Component Chassis** for 6 Increments of 1/6 Rack Width



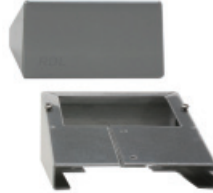
## EZ-SMB1

**Surface Mount Bezel** for 1/6 Rack Width Products



## EZ-DC1

**Desktop Chassis** 1/6 Rack Width



## EZ-UCB2

**Under-Counter Brackets** 1/6 or 1/3 Rack Width



## EZ-SD1

**Storage Drawer** 1/6 Rack Width

Use In Place of Filler Panel  
Holds Adapters and Cables  
Mounts in EZ-CC6 and EZ-RA6



---

## TYPICAL PERFORMANCE

Input: 47 k $\Omega$  on stereo RCA jacks  
Input Level: -18 dBV max.  
Gain: OFF to +55 dB (1 kHz)  
Output: -10 dBV nominal on stereo RCA jacks  
Equalization: RIAA  
Frequency Response: 20 to 20 kHz ( $\pm 0.75$  dB referred to RIAA curve)  
Crosstalk: < -75 dB (1 kHz)  
THD+N: < 0.05% (20 to 20 kHz, 36 dB gain)  
Noise: < -74 dB (36 dB gain, 1 kHz), < -80 dB (36 dB gain, 1 kHz, "A-weighted")  
24 Vdc power supply current: 30 mA (idle), 45 mA (max.)  
Power supply input voltage: 100 to 240 VAC  
Warranty: 3 Years; contact RDL technical support department for assistance  
Case dimensions: 2.9" (7.4 cm)W x 3" (7.6 cm)D  
Mounting size: 1/6 rack width

CE

891-1570