



APANTAC "How-To"

Article: IP-Multiviewers

Setup Procedures for Tahoma 'IP' Multiviewers

Applicable to: Apantac Tahoma Series 'IP' video Multiviewers

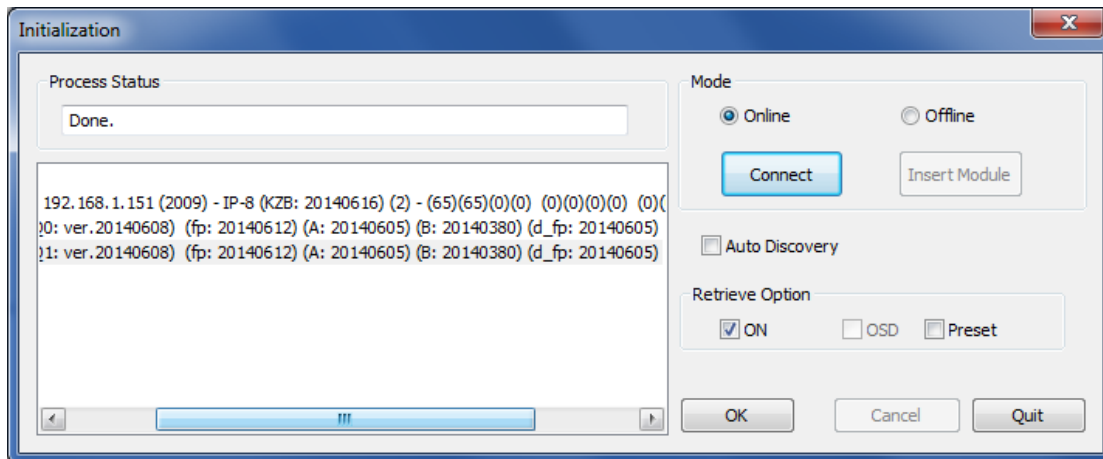
SETUP

Connect the multiviewer:

- Ethernet to control computer
- AA or AES output to speakers
- Final video output to monitor
- Power cord

Connect Director:

- Start Director (for multiviewer firmware kzb:20140616 ipb:20140380 use GUI140703v3.0a)
NOTE: IP multiviewers take approximately 2 minutes to boot. Wait at the Initialization screen.
- Start a QC log entry and note all firmware numbers
- Check retrieve option ON
- Click OK



Initial Configuration:

- Set outputs to 1080p-60Hz
- Turn on the first window's 'Video Format' object
- Turn on two audio meters in the first window
- Copy the first window and 'System / Global / Window Paste' to all windows
- Set layout (2x2, 3x3, 4x4) for optimum window size

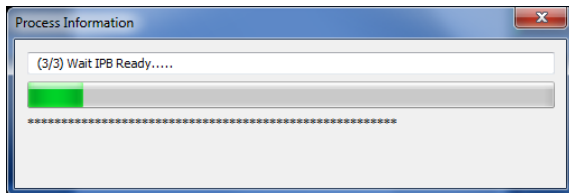
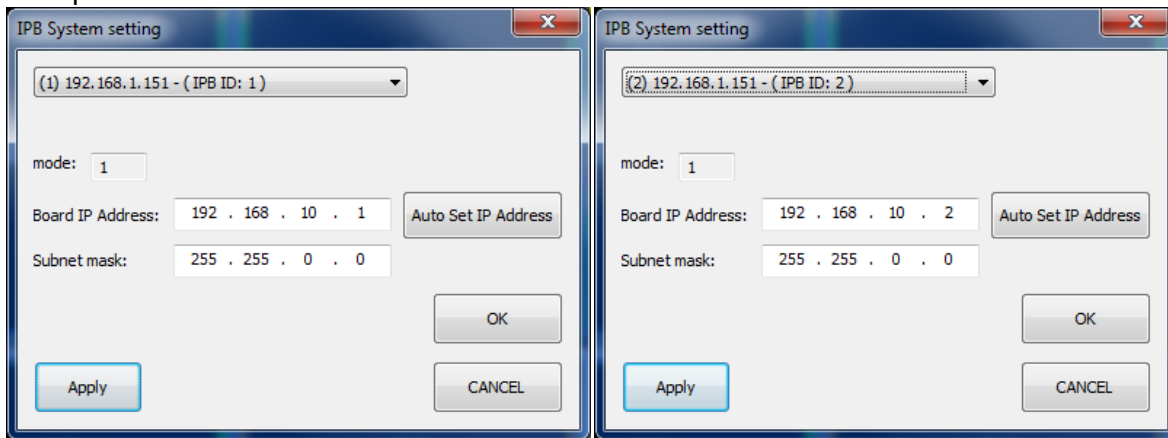
IP System Configuration:

Choose IPB System Setting... under the System menu.

Set each IPB input circuit board's system parameter's.

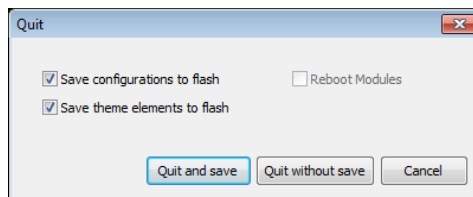
- Use the top pulldown to choose a circuit board
- Set the Board IP Address (to an address reachable by the streaming PC)
- Set the Subnet Mask
- Click Apply
- Repeat for each board
- Click OK

Example: IP-8



Power Down:

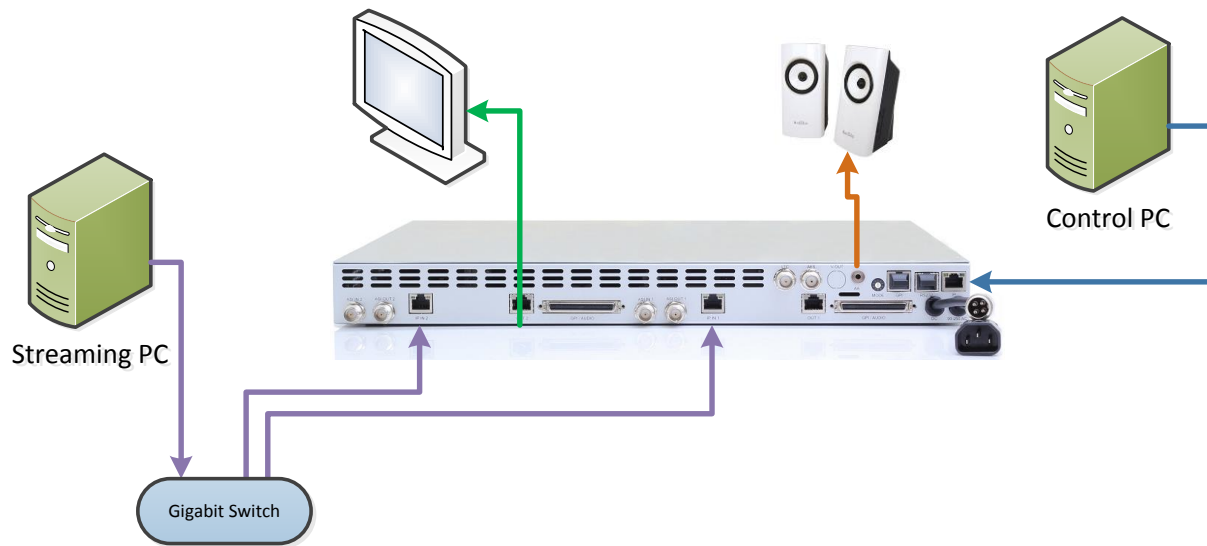
- Close Director
- Quit and Save
- Power down the unit



IP UNICAST TESTING

Connect the multiviewer:

- IP port to control computer
- AA or AES output to speakers
- Final video output to monitor
- Streaming PC to Gigabit Ethernet Switch
- Gigabit Switch to the IPB Ethernet input ports; "IP IN 1", "IP IN 2", etc
- Power cord



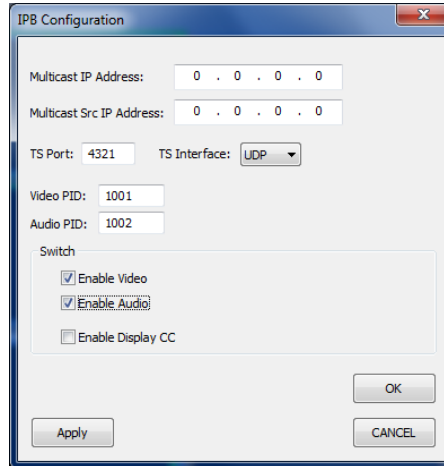
Configure the Video Inputs using Director:

Start Director, with 'ON' checked.

Right-Click an individual video window and choose "Set IPB Configuration"

Setup Multiviewer inputs to match the streaming source.

- Set both IP addresses to 0.0.0.0
- Set the TS Interface to UDP
- Check the Enable Video
- Check the Enable Audio



- Set the TS Port, Video PID, and Audio PID according to your stream.

Example:

window	TS Port	Video PID	Audio PID
1.1	4321	1001	1002
1.2	4322	1001	1002
1.3	4323	1001	1002
1.4	4324	1001	1002
2.1	4321	1001	1002
2.2	4322	1001	1002
2.3	4323	1001	1002
2.4	4324	1001	1002

Exit Director, Quit and Save, and Reboot unit.

Video may take some time to begin sync. (Power up to all videos displayed is approximately 2:30 minutes.)

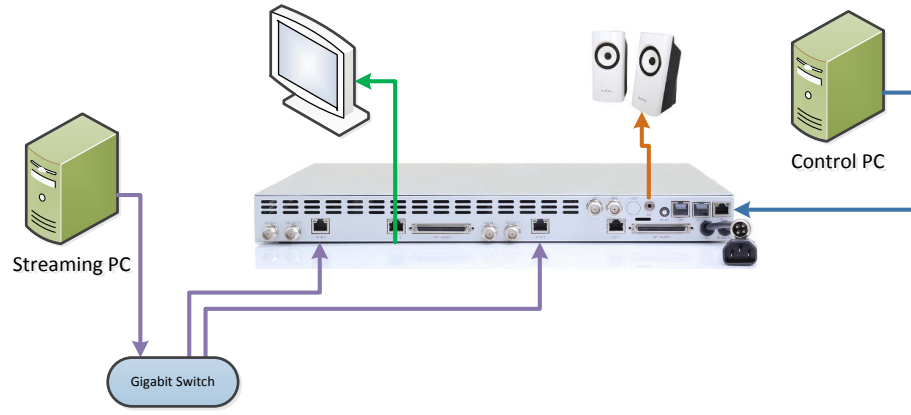
Recheck Window IPB configuration of windows not displaying video.

Verify Video and Audio Meters. Check audio output.

IP MULTI-CASTING TESTING

Connect the multiviewer:

- Same as Unicast testing.



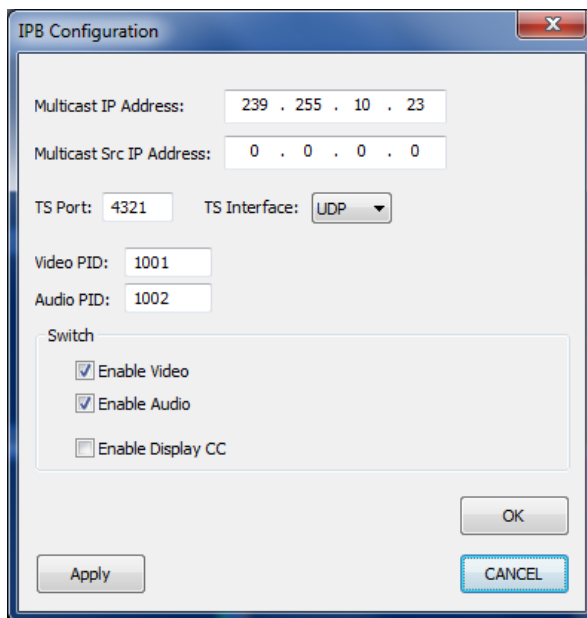
Configure the Video Inputs using Director:

Within Director, right-click video window "1.1" and choose "Set IPB Configuration"

NOTE: It seems to be only required to change one window of each QSB (1.1 and 2.1). Once the input circuit card is receiving the stream the other windows receive according to the port number.

Setup Multiviewer inputs to match the streaming source.

- Set the Multicast IP address to your video stream destination (ex. 239.255.10.23)
- Leave all other parameters the same as for Unicast testing



Wait about 30 seconds for video to begin appearing.

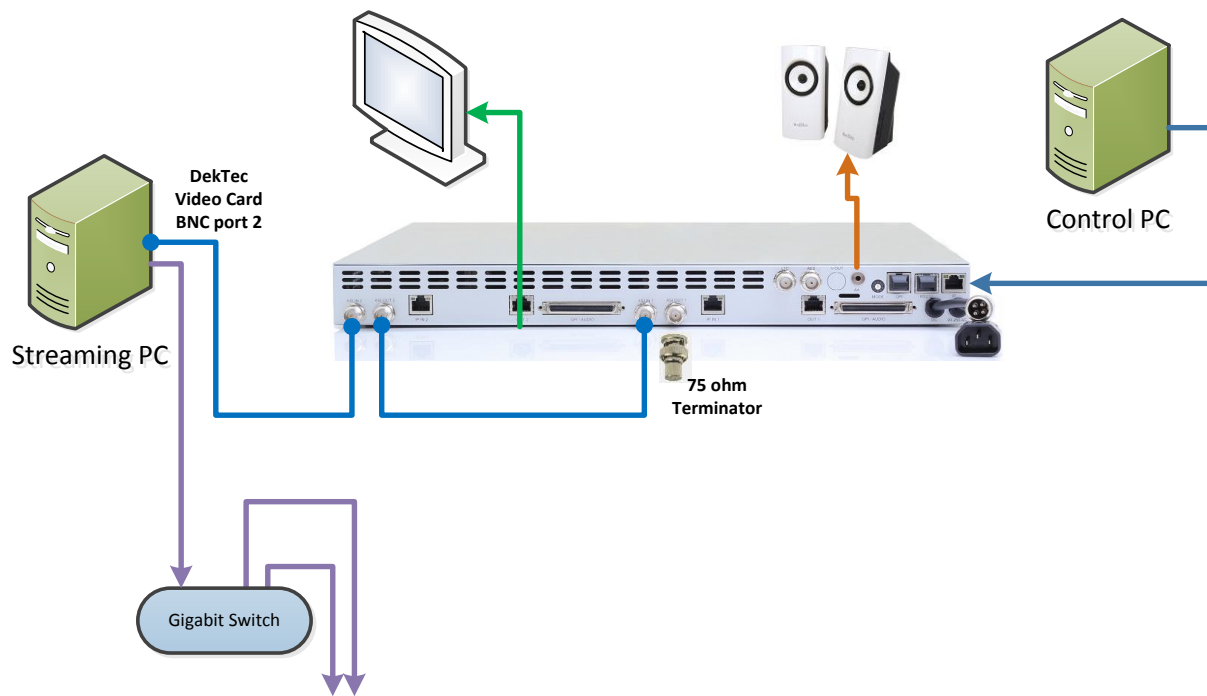
Recheck Window IPB configuration of windows not displaying video.

Verify Video and Audio Meters. Check audio output.

ASI VIDEO STREAMING TESTING

Connect the multiviewer:

- IP port to control computer
- AA or AES output to speakers
- Final video output to monitor
- Streaming PC DekTec Video Card BNC port 2 to 'ASI IN 2' with BNC cable
- 'ASI OUT 2' to 'ASI IN 1' with BNC cable
- Terminate 'ASI OUT 1' with BNC 75-ohm terminator
- Power cord



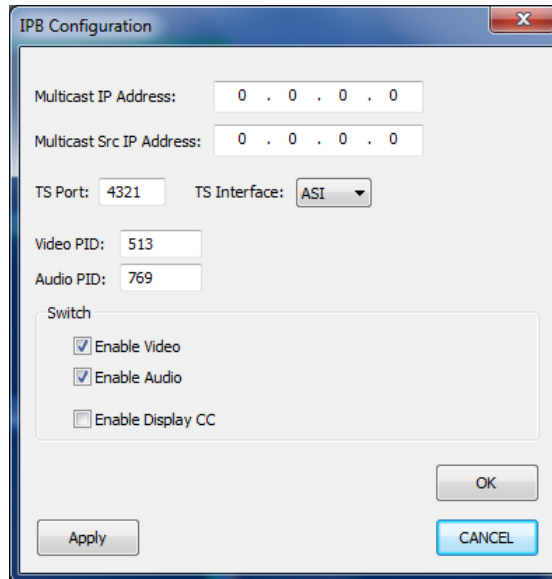
Configure the Video Inputs using Director:

Start Director, with 'ON' checked.

Right-Click an individual video window and choose "Set IPB Configuration"

Setup Multiviewer inputs to match the streaming source.

- Set both IP addresses to 0.0.0.0
- **Set the TS Interface to ASI**
- Check the Enable Video
- Check the Enable Audio



- Set the TS Port, Video PID, and Audio PID according to your stream.
Example:

window	TS Port	Video PID	Audio PID
1.1	n/a	513	769
1.2	n/a	514	771
1.3	n/a	515	773
1.4	n/a	516	775
2.1	n/a	517	777
2.2	n/a	518	779
2.3	n/a	519	781
2.4	n/a	520	783

Exit Director, Quit and Save, and Reboot unit.

Video may take some time to begin sync. (Power up to all videos displayed is approximately 2:30 minutes.)

Recheck Window IPB configuration of windows not displaying video.

Verify Video and Audio Meters. Check audio output.