

What's in the Box?

PART NO.	QTY	DESCRIPTION
DVX-MUTXS	1	DVI-D, RS232, USB, Audio over CAT6 STP Extender Transmitter
DVX-MURXS	1	DVI-D, RS232, USB, Audio over CAT6 STP Extender Receiver
Power Supply	2	PS5VDC4A

Technical Specifications

VIDEO	
Format	DVI-D Single Line
Maximum Pixel Clock	165 MHz
Input Interface (TX)	DVI-D 29-pin female
Output Interface (RX)	DVI-D 29-pin female
Resolution	Up to 1920 x 1200 @60Hz
DDC	5 volts p-p(TTL)
Input Equalization	Automatic
Input Cable Length	Up to 20 ft.
Output Cable Length	Up to 20 ft.
RS232	
Interface	DB9 Male
Control	Via Software @ 19,200 bps
USB	
Signal Type	OHCI/UHCI (USB 1.1)
Input Interface (TX)	(1) USB Type B (Female)
Output Interface (RX)	(4) USB Type A (Female)
AUDIO	
Signal Type	Stereo Unbalanced
Input Interface (TX)	3.5 mm Jack Socket (Female)
Output Interface (RX)	3.5 mm Jack Socket (Female)
OTHER	
Power	External 100-240 VAC/5VDC4A @20W
Dimensions	7.5 in W x 1 in H x 3.5 in D
Weight	1 lb
Operating Temp.	0-55 °C (32-131°F)
Storage Temp.	-20-85 °C (-4-185 °F)
Humidity	Up to 95%

© Copyright 2011 Smart-AVI, All Rights Reserved

NOTICE


The information contained in this document is subject to change without notice. Smart-AVI makes no warranty of any kind with regard to this material, including but not limited to, implied warranties of merchantability and fitness for any particular purpose.

Smart-AVI will not be liable for errors contained herein or for incidental or consequential damages in connection with the furnishing, performance or use of this material.


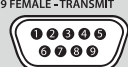
No part of this document may be photocopied, reproduced or translated into another language without prior written consent from Smart-AVI.

For more information, visit www.smartavi.com.

CAT5/5e/6 CABLE SPECIFICATIONS

CONNECTOR	PAIR	PINS
RJ-45 MALE 	1	1 & 2
	2	3 & 6
	3	4 & 5
	4	7 & 8
CAPACITANCE	14 pF/ft (46.2 pF/m)	
CONDUCTOR GAUGE	24 AWG	
IMPEDANCE	100 +/- 15 ohms	

RS-232 SPECIFICATIONS

CONNECTOR	PIN	NAME	DESCRIPTION
DB9 MALE - RECEIVE 	2	RxD	Receive Data on DB9 Male
	3	TxD	Transmit Data on DB9 Male
	5	SGND	Ground
DB9 FEMALE - TRANSMIT 	2	TxD	Transmit Data on DB9 Female
	3	RxD	Receive Data on DB9 Female
	5	SGND	Ground



Installation Manual

DVX-Multi



DVI-D, RS232, USB 1.1 and Audio Extender up to 275 feet over 3 STP Cables



SmartAVI, Inc. / Twitter: smartavi
 11651 Vanowen St., North Hollywood, CA 91605
 Tel: (818) 503-6200 Fax: (818) 503-6208
<http://www.SmartAVI.com>

www.smartavi.com

Introduction

The DVX-Multi extends DVI-D, RS232, USB 1.1 and Audio up to 275 feet over 3 STP Cables.

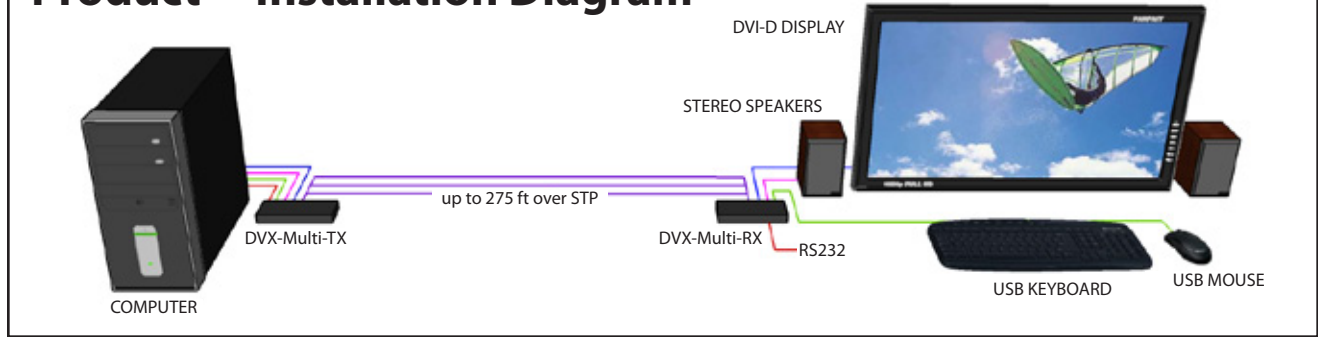
Features

- Top image quality at all resolutions
- Resolutions up to 1920 x 1200 at 60Hz (1280 x 1024 at 75Hz)
- Distance: 275 feet with 3 CAT6 STP cables
- Compatible with all operating systems
- Compatible with all major KVM switches
- Rack mount options (19)
- Supports USB 1.1 keyboard and mouse
- Uses easy-to-install, inexpensive pair cable
- Data recovery for digital video
- Fully-compliant with USB 1.1 specifications
- Supports 1.5 and 12Mbps data rates
- External power adaptors for transmitter and receiver units
- Fully-transparent (does not use any emulation)
- Plug-and-play

Applications

- Medical Applications
- Industrial Work Areas
- Home Theater Integration
- Digital Signage Deployment
- Information Kiosks/Displays
- Film/Recording Studios

Product - Installation Diagram



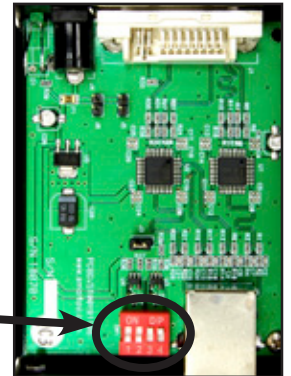
Connecting the DVX-Multi

1. Power off all devices.
2. Connect a DVI-D source (computer) to the DVX-Multi-TX.
3. Connect an audio source to the DVX-Multi-TX.
4. Connect a USB source to the USB port of the the DVX-Multi-TX.
5. Connect RS232 devices to the DVX-Multi-TX.
6. Connect the DVX-Multi-TX to the the DVX-Multi-RX with three STP (Sheilded Twisted Pair) cables.
7. Connect a DVI display to the DVX-Multi-RX.
8. Connect speakers to the DVX-Multi-RX.
9. Connect up to 4 USB 1.1 devices to the DVX-Multi-RX.
10. Connect RS232 devices to the DVX-Multi-RX.
11. Connect the power supply the DVX-Multi-TX and DVX-Multi-RX.
12. Power on the computer, displays, speakers, RS232 devices and USB 1.1 devices.

Setting the DDC

DDC provides plug-and-play capability to your displays. When you plug a display into your computer, the DDC table in the display tells the computer the optimal resolution to use. The DVX-Multi is capable of supporting two primary types of displays: PC and Mac. The default setting is PC.

To change this setting, first remove the top cover from the DVX-Multi TRANSMITTER by removing the four side screws. Next, locate the DIP switches near the rear of the device next to the Data Port (RJ45 Ethernet Port).

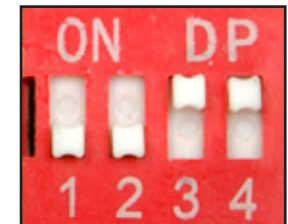


For PC, configure the switches as shown below:



1&2 ON, 3&4 OFF

For Mac, configure the switches as shown below:



1&2 OFF, 3&4 ON