

HDM2.0-UHD-UDC



HDMI 2.0 up and down converter

Package Contents

- 1 x HDM2.0-UHD-UDC
- 1 x User Manual
- 1 x Power Adapter DC 12V with Lock

Features

- Up/down conversion for HDMI sources from 1080P to UHD and UHD to 1080P
- All other resolutions will be bypassed from input to output
- UHD 4:2:0 will be bypassed from input to output instead of down converted to 1080P
- Supports HDCP 2.4/2.2
- HDCP Compliant
- Maximum resolution supported is UHD 60Hz, 4:4:4

Specifications

MODEL	HDM2.0-UDC-UHD
HDMI Input	1 x HDMI Type A Female
HDMI Outputs	2 x HDMI Type A Female
F/W upgrade port	1 x 3.5 mm stereo Jack
Reset button	1 x Tact switch
Mode	1 x 4 position DIP switch
LED Status	Scaling
	Engineering Mode
	HDMI In
	HDMI Out
	Power
Max Resolution	UHD
Max Frequency	600 MHz
Power	DC 12V with locking
Weight	275 g
Dimension	150x80x25 mm

Front View



Ports listed left to right

1. 1 x HDMI Type A Input Connector
2. 1 x HDMI Type A Output Connector

Rear View



Ports listed left to right

1. FW upgrade port
2. Reset switch
3. 4 position DIP switch



Pin1	Pin2	Scale
Off	Off	Disable
Off	On	1080P to UHD
On	Off	UHD to 1080P
On	On	Reserved
Pin 3	ENG (Factory Test Mode)	
Off	Disable	
On	Enable	

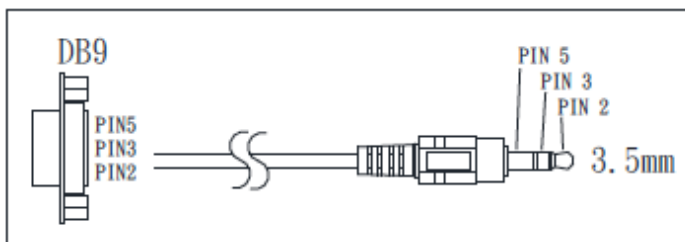
4. Scaling LED (Green = On)
5. ENG LED (Green = On)
6. HDMI output LED (Green = Active)
7. HDMI input LED (Green = Input detected)
8. Power LED
9. Power Jack (12V DC)

Pin#	Signal	Pin#	Signal
1	TMDS Data 2+	11	TMDS Clock Shield
2	TMDS Data 2 Shield	12	TMDS Clock -
3	TMDS Data 2-	13	CEC
4	TMDS Data 1+	14	Reserved
5	TMDS Data 1 Shield	15	SCL
6	TMDS Data 1-	16	SDA
7	TMDS Data 0+	17	DDC/CEC Ground
8	TMDS Data Shield	18	+5V Power
9	TMDs Data 0-	19	Hot Plug Detect
10	TMDS Clock+		

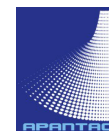
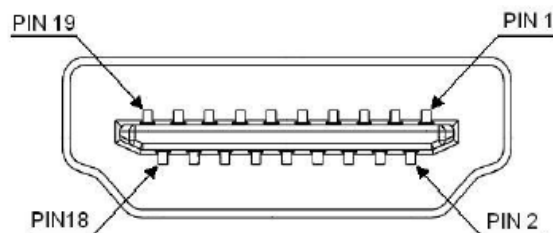
Installation

1. Turn off both source and display
2. Connect the HDMI sources to input HDMI port
3. Connect the HDMI cables between the HDMI output port and the displays
4. Connect power cord
5. Turn on the HDMI source and displays

FW upgrade cable pin out



HDMI Connector pin out



© 2017 APANTAC LLC, All rights reserved
 7470 SW BRIDGEPORT ROAD
 PORTLAND, OR 97224, USA
 PHONE +1 503 968 3000, FAX +1 503 389 7921

The content of this document are provided in connection with Apantac LLC ("Apantac") products. Apantac makes no representation or warranties with respect to the accuracy or completeness of the contents of this publication and reserves the right to make changes to specification and product descriptions at any time without notice